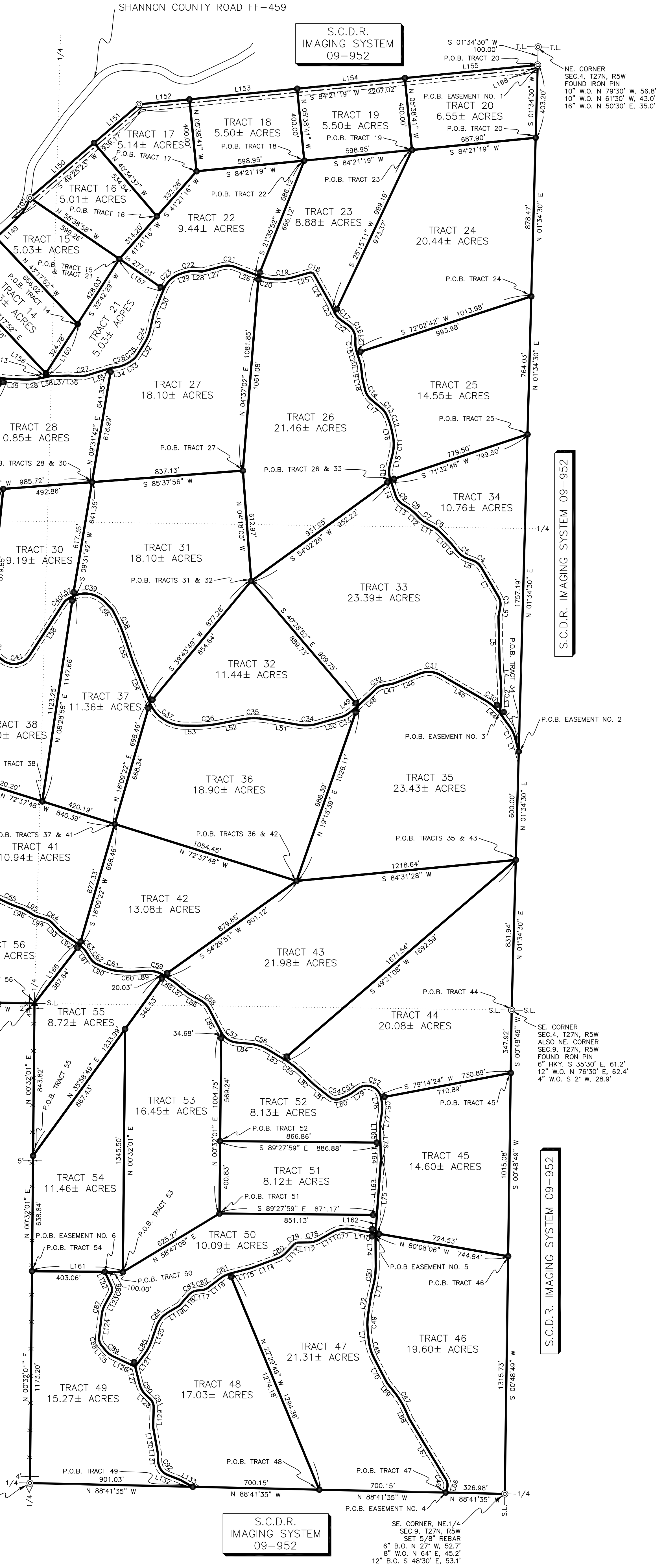


LINE	BEARING	DISTANCE
L1	N 15°04'51" W	80.67'
L2	N 35°50'58" W	94.56'
L3	N 05°28'37" E	38.64'
L4	N 04°23'49" W	76.52'
L5	N 01°29'40" W	280.81'
L6	N 10°58'54" E	51.85'
L7	N 30°18'55" W	184.37'
L8	N 70°22'15" W	30.08'
L9	N 38°36'49" W	50.59'
L10	N 43°58'28" W	86.47'
L11	N 83°03'06" W	171.24'
L12	N 42°46'58" W	7.55'
L13	N 58°48'15" W	17.14'
L14	N 18°27'14" W	90.09'
L15	N 13°45'34" E	61.95'
L16	N 11°14'35" W	24.21'
L17	N 50°30'01" W	69.79'
L18	N 13°01'57" W	64.38'
L19	N 06°20'17" W	73.77'
L20	N 17°57'18" W	69.49'
L21	N 02°05'00" E	7.51'
L22	N 54°44'12" W	55.06'
L23	N 25°29'46" W	63.16'
L24	N 29°23'56" W	180.41'
L25	N 13°45'34" E	89.64'
L26	N 69°15'17" W	137.24'
L27	S 75°17'57" W	113.12'
L28	N 86°59'02" W	40.27'
L29	S 71°37'34" W	20.53'
L30	S 22°21'42" W	143.41'
L31	S 13°00'06" W	94.83'
L32	S 31°10'41" W	72.96'
L33	S 58°41'32" W	8.16'
L34	S 84°08'44" W	13.48'
L35	S 72°55'33" W	130.50'
L36	N 88°08'43" E	49.34'
L37	S 87°41'17" W	102.58'
L38	S 77°59'04" W	37.79'
L39	N 87°01'51" W	88.25'
L40	N 80°43'57" W	189.56'
L41	N 89°12'06" W	188.87'
L42	N 56°45'57" W	239.78'
L43	N 48°09'03" W	49.78'
L44	N 42°55'57" W	30.28'
L45	N 60°17'29" W	279.46'
L46	N 89°37'17" W	151.58'
L47	S 78°53'59" W	63.33'
L48	S 46°55'31" W	137.68'
L49	S 51°19'47" W	54.85'
L50	S 73°56'03" W	131.71'
L51	N 82°09'50" W	188.87'
L52	S 79°14'19" W	124.55'
L53	N 89°42'56" W	72.75'
L54	N 22°20'15" W	242.35'
L55	N 18°56'38" W	143.04'
L56	N 40°18'34" W	78.80'
L57	S 63°30'33" W	23.23'
L58	S 32°55'03" W	343.27'
L59	N 51°53'21" W	65.89'
L60	S 85°46'36" W	401.34'
L61	N 89°29'02" W	236.86'
L62	N 74°53'32" W	16.36'
L63	N 85°55'21" W	250.28'
L64	N 72°10'40" W	95.21'
L65	S 79°56'54" W	33.94'
L66	N 18°08'43" E	23.24'
L67	N 31°05'41" W	392.21'
L68	N 24°17'01" W	50.89'
L69	N 38°56'22" W	58.38'
L70	N 27°37'46" W	154.05'
L71	N 08°30'02" W	50.88'
L72	N 08°27'21" E	111.64'
L73	N 13°45'54" E	60.42'
L74	N 00°15'04" W	185.09'
L75	N 04°09'54" E	405.57'
L76	N 01°33'41" W	194.65'
L77	N 09°00'47" E	66.70'
L78	N 10°45'36" W	17.95'
L79	S 53°35'08" W	34.75'
L80	S 74°43'27" W	27.89'
L81	N 51°52'02" W	101.61'
L82	N 46°47'40" W	119.01'
L83	N 59°14'47" W	101.05'
L84	N 84°31'48" W	72.80'
L85	N 27°32'30" W	144.45'
L86	N 61°07'55" W	76.32'
L87	N 50°50'18" W	100.25'
L88	N 56°50'10" W	69.16'
L89	S 85°33'47" W	37.06'
L90	N 66°27'16" W	46.82'
L91	N 31°52'03" W	128.92'
L92	N 55°00'08" W	128.92'
L93	N 42°42'11" W	63.63'
L94	N 72°31'27" W	67.32'
L95	N 58°48'55" W	70.32'
L96	N 71°03'52" W	25.87'
L97	N 69°51'57" W	86.69'

LINE	BEARING	DISTANCE
L98	N 43°23'27" W	109.93'
L99	S 81°35'28" W	108.81'
L100	S 54°24'21" W	91.49'
L101	S 83°38'56" W	35.37'
L102	S 83°23'11" W	55.87'
L103	S 89°20'24" W	76.43'
L104	N 60°02'26" W	121.51'
L105	N 71°07'42" W	95.98'
L106	N 83°20'19" W	3.55'
L107	S 72°21'57" W	39.71'
L108	S 01°39'25" W	168.70'
L109	N 59°25'04" W	492.07'
L110	N 80°08'06" W	134.99'
L111	S 60°40'31" W	80.41'
L112	S 89°09'50" W	56.03'
L113	S 44°00'46" W	64.95'
L114	S 69°36'47" W	155.68'
L115	S 75°12'33" W	124.17'
L116	S 52°23'44" W	81.87'
L117	S 84°33'57" W	23.07'
L118	S 40°30'10" W	75.35'
L119	S 58°51'19" W	77.47'
L120	S 19°07'26" W	89.28'
L121	S 36°40'37" W	87.72'
L122	S 25°00'10" E	83.75'
L123	S 28°40'52" W	67.88'
L124	S 08°41'30" W	122.22'
L125	S 40°17'18" E	34.52'
L126	S 65°02'26" E	131.66'
L127	S 13°57'54" E	99.35'
L128	S 43°39'44" E	21.97'
L129	S 01°39'51" W	107.77'
L130	S 10°13'41" E	142.41'
L131	S 02°53'38" E	49.95'
L132	S 68°23'52" E	73.75'
L133	S 61°14'28" E	79.15'
L134	S 28°28'48" W	55.01'
L135	N 37°01'26" E	55.27'
L136	N 37°01'26" E	54.20'
L137	N 25°30'10" E	172.90'
L138	N 40°54'50" E	185.87'
L139	N 40°54'50" E	192.53'
L140	S 06°23'43" W	171.31'
L141	N 06°23'43" E	318.37'
L142	N 06°23'43" E	240.84'
L143	N 09°34'26" E	51.27'

LINE	BEARING	DISTANCE
L144	N 05°34'26" E	185.84'
L145	N 46°42'04" E	350.80'
L146	S 45°50'12" W	340.50'
L147	N 46°42'08" E	418.97'
L148	N 46°42'08" E	315.14'
L149	N 46°42'08" E	163.47'
L150	N 49°25'23" E	466.92'
L151	N 49°25'23" E	328.99'
L152	N 84°21'20" E	279.38'
L153	N 84°21'19" E	598.95'
L154	N 84°21'19" E	598.95'
L155	N 84°21'19" E	738.57'
L156	S 32°42'29" W	28.87'
L157	S 55°38'58" E	297.42'
L158	N 27°05'46" E	487.79'
L159	S 07°17'52" W	491.82'
L160	S 32°42'29" W	353.65'
L161	S 89°27'59" E	503.06'
L162	S 04°09'54" W	101.39'
L163	N 04°09'54" E	304.18'
L164	N 01°33'41" W	97.33'
L165	N 01°33'41" W	97.33'
L166	N 37°49'30" E	407.67'
L167	N 25°45'14" W	509.17'
L168	S 01°34'30" W	20.16'



S.C.D.R. IMAGING SYSTEM 6772

S.C.D.R. BOOK 145 PAGE 317

S.C.D.R. IMAGING SYSTEM 09-952

S.C.D.R. IMAGING SYSTEM 09-952

S.C.D.R. IMAGING SYSTEM 09-952

CURVE	ARC LENGTH	RADIUS	CHORD BEARING	CHORD LENGTH
C1	65.25'	180.00'	N 25°27'54" W	64.89'
C2	138.90'	806.00'	N 00°32'24" E	138.73'
C3	62.71'	87.00'	N 09°40'00" W	61.36'
C4	65.02'	93.00'	N 50°20'35" W	63.70'
C5	69.84'	126.00'	N 54°29'32" W	68.95'
C6	71.07'	213.00'	N 53°32'01" W	70.74'
C7	67.00'	189.00'	N 52°56'16" W	66.65'
C8	85.01'	304.00'	N 50°47'37" W	84.73'
C9	64.79'	92.00'	N 38°37'44" W	63.46'
C10	82.65'	147.00'	N 02°20'50" W	81.56'
C11	105.73'	238.00'	N 01°02'00" E	104.86'
C12	98.55'	407.00'	S 18°37'49" E	98.31'
C13	45.91'	105.51'	N 38°02'01" W	45.55'
C14	69.97'	107.00'	N 31°45'59" W	68.73'
C15	67.85'	194.00'	N 56°09'27" W	67.50'
C16	91.24'	92.00'	N 26°19'36" W	87.64'
C17	45.93'	90.00'	N 40°06'59" W	45.43'
C18	29.37'	22.00'	N 67°38'17" W	27.23'
C19	123.55'	323.00'	S 85°04'51" W	122.80'
C20	75.06'	292.45'	N 76°36'28" W	74.86'
C21	74.24'	120.00'	N 52°07'42" W	73.06'
C22	63.47'	170.00'	S 82°19'16" W	63.10'
C23	128.97'	150.00'	S 46°59'38" W	125.04'
C24	74.87'	236.00'	S 22°05'24" W	74.56'
C25	64.83'	135.00'	S 44°56'07" W	64.21'
C26	88.40'	712.00'	N 71°25'08" W	87.68'
C27	64.74'	177.00'	S 83°24'18" W	64.38'
C28	121.61'	465.00'	S 85°28'37" W	121.27'
C29	62.76'	167.00'	N 69°58'01" W	62.39'
C30	78.47'	259.00'	N 51°36'43" W	78.17'
C31	124.66'	1141.00'	N 78°51'12" W	120.64'
C32	41.85'	75.00'	S 62°54'45" W	41.31'
C33	59.97'	152.00'	S 62°37'55" W	59.58'
C34	105.33'	236.00'	S 86°43'12" W	104.46'
C35	134.06'	379.00'	S 89°22'20" W	133.37'
C36	123.96'	645.00'	S 84°42'24" W	123.77'
C37	238.72'	203.00'	N 56°01'35" W	225.20'
C38	152.58'	972.00'	N 23°26'28" W	152.42'
C39	191.04'	151.00'	N 80°14'44" W	178.55'
C40	43.78'	82.00'	S 48°12'48" W	43.26'
C41	171.13'	103.00'	N 80°30'51" W	152.11'
C42	40.64'	55.00'	N 73°03'22" W	39.72'
C43	82.83'	288.00'	N 83°07'52" W	82.54'
C44	124.17'	645.00'	N 80°24'27" W	123.98'
C45	64.22'	132.00'	N 86°06'53" W	63.59'
C46	51.53'	60.00'	N 80°30'51" W	51.48'
C47	124.31'	486.00'	N 31°36'42" W	123.98'
C48	105.93'	285.00'	N 16°58'54" W	105.32'
C49	92.41'	358.00'	N 01°03'39" E	92.15'
C50	97.61'	399.00'	N 06°45'25" E	97.36'
C51	68.68'	199.00'	N 00°52'25" W	68.34'
C52	163.50'	81.00'	N 68°35'14" W	137.12'
C53	64.19'	174.00'	S 64°09'17" W	63.83'
C54	46.60'	50.00'	N 78°34'27" W	44.93'
C55	109.97'	506.00'	N 53°01'14" W	109.75'
C56	106.79'	242.00'	N 74°52'13" W	70.54'
C57	108.42'	109.00'	N 56°02'09" W	104.00'
C58	65.65'	112.00'	N 44°20'02" W	64.71'
C59	105.00'	160.00'	N 75°38'12" W	103.13'
C60	122.80'	631.00'	N 85°51'41" W	122.61'
C61	70.79'	240.98'	N 01°53'21" W	70.54'
C62	51.31'	85.00'	N 49°09'40" W	50.54'
C63	58.55'	145.00'	N 43°26'06" W	58.15'
C64	44.76'	86.00'	N 57°36'49" W	44.26'
C65	134.39'	755.00'	N 65°57'54" W	134.21'
C66	78.08'	144.00'	N 86°58'40" W	73.06'
C67	138.28'	144.00'	N 70°54'00" W	133.02'
C68	98.69'	208.00'	S 67°59'54" W	97.77'
C69	91.36'	179.00'	S 69°01'39" W	90.37'
C70	95.84'	385.00'	S 76°31'04" W	95.59'
C71	217.83'	149.00'	N 78°51'12" W	217.48'
C72	98.23'	178.00'	N 75°51'01" W	96.99'
C73	118.06'	554.00'	N 77°14'01" W	117.84'
C74	74.21'	175.00'	S 84°30'49" W	73.65