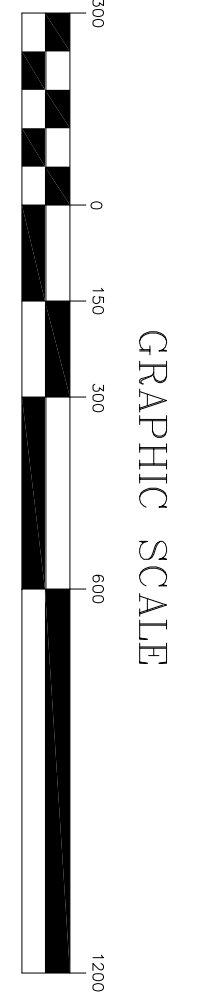


LOCATION MAP

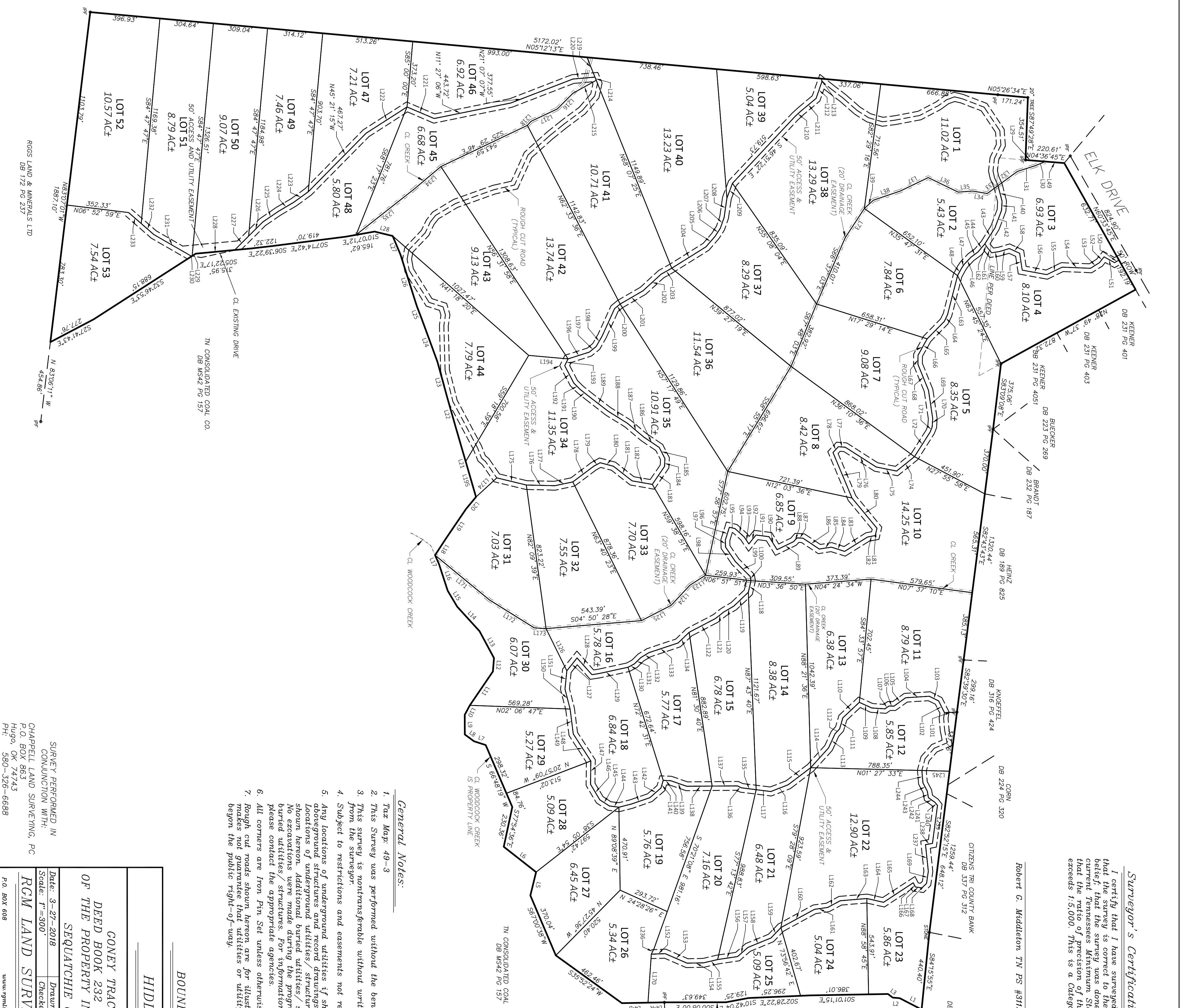
LINE	BEARING	DISTANCE	LINE	BEARING	DISTANCE	LINE	BEARING	DISTANCE
1	N 72°15'27"E	139.54'	101	S 89°52'18"W	275.77'	181	N 89°52'18"W	275.77'
2	S 84°55'17"W	40.07'	102	S 89°52'18"W	275.77'	182	N 89°52'18"W	275.77'
3	S 84°55'17"W	40.07'	103	N 89°52'18"W	275.77'	183	N 89°52'18"W	275.77'
4	S 84°55'17"W	40.07'	104	N 89°52'18"W	275.77'	184	N 89°52'18"W	275.77'
5	S 84°55'17"W	40.07'	105	N 89°52'18"W	275.77'	185	N 89°52'18"W	275.77'
6	S 84°55'17"W	40.07'	106	N 89°52'18"W	275.77'	186	N 89°52'18"W	275.77'
7	S 84°55'17"W	40.07'	107	N 89°52'18"W	275.77'	187	N 89°52'18"W	275.77'
8	S 84°55'17"W	40.07'	108	N 89°52'18"W	275.77'	188	N 89°52'18"W	275.77'
9	S 84°55'17"W	40.07'	109	N 89°52'18"W	275.77'	189	N 89°52'18"W	275.77'
10	S 84°55'17"W	40.07'	110	N 89°52'18"W	275.77'	190	N 89°52'18"W	275.77'
11	S 84°55'17"W	40.07'	111	N 89°52'18"W	275.77'	191	N 89°52'18"W	275.77'
12	S 84°55'17"W	40.07'	112	N 89°52'18"W	275.77'	192	N 89°52'18"W	275.77'
13	S 84°55'17"W	40.07'	113	N 89°52'18"W	275.77'	193	N 89°52'18"W	275.77'
14	S 84°55'17"W	40.07'	114	N 89°52'18"W	275.77'	194	N 89°52'18"W	275.77'
15	S 84°55'17"W	40.07'	115	N 89°52'18"W	275.77'	195	N 89°52'18"W	275.77'
16	S 84°55'17"W	40.07'	116	N 89°52'18"W	275.77'	196	N 89°52'18"W	275.77'
17	S 84°55'17"W	40.07'	117	N 89°52'18"W	275.77'	197	N 89°52'18"W	275.77'
18	S 84°55'17"W	40.07'	118	N 89°52'18"W	275.77'	198	N 89°52'18"W	275.77'
19	S 84°55'17"W	40.07'	119	N 89°52'18"W	275.77'	199	N 89°52'18"W	275.77'
20	S 84°55'17"W	40.07'	120	N 89°52'18"W	275.77'	200	N 89°52'18"W	275.77'

ROGS LAND & MINERALS LTD
DB 172 PG 237

ROGS LAND & MINERALS LTD
DB 172 PG 237



1 inch = 300 ft



Surveyor's Certification
I certify that I have surveyed the property shown hereon, that I am duly licensed and qualified to do so, and that the survey was done in compliance with the current Tennessee Minimum Standards of Precision and that the ratio of precision of the undisturbed survey exceeds 1:5,000. This is a Category "3" Survey.

Robert G. Middleton, TN PS #3112

General Notes:

1. Tax Map: 49-3
2. This survey was performed without the benefit of a Title Commitment
3. This survey is nontransferable without written permission from the surveyor.
4. Subject to restrictions and easements not recorded in current Deed of record.
5. Any locations of underground utilities if shown hereon are based on aboveground structures and record drawings provided the surveyor. Locations of underground utilities/structures may vary from locations shown hereon. Additional buried utilities/structures may be encountered. No excavations were made during the progress of this survey to locate buried utilities/structures. For information regarding these utilities, please contact the appropriate agencies.
6. All corners are Iron Pin Set unless otherwise noted.
7. Rough cut roads shown hereon are for illustrative purposes only. The surveyor makes no guarantee that utilities or utility connection are or will be available beyond the public right-of-way.

BOUNDARY SURVEY
HIDDEN HILLS

CONEY TRACT AS RECORDED IN
DEED BOOK 232 PAGE 189 & A PORTION
OF THE PROPERTY IN DEED BOOK 196 PAGE 451
SEQUATCHIE COUNTY, TENNESSEE

Date: 3-27-2018	Drawn: T.D. Chappell	Comp:
Scale: 1"=300'	Checked: RCM	Job#: 17-09-1
<p>ROGS LAND SURVEYING, PLLC P.O. BOX 663 Hugo, OK 74743 Tel: 580-320-6688 Fax: 580-320-2800</p>		
P.O. BOX 608 58001 Dale, TX 75784	www.rgms.com rgm@rgms.com	PH: 423-803-6697
		17-09-1