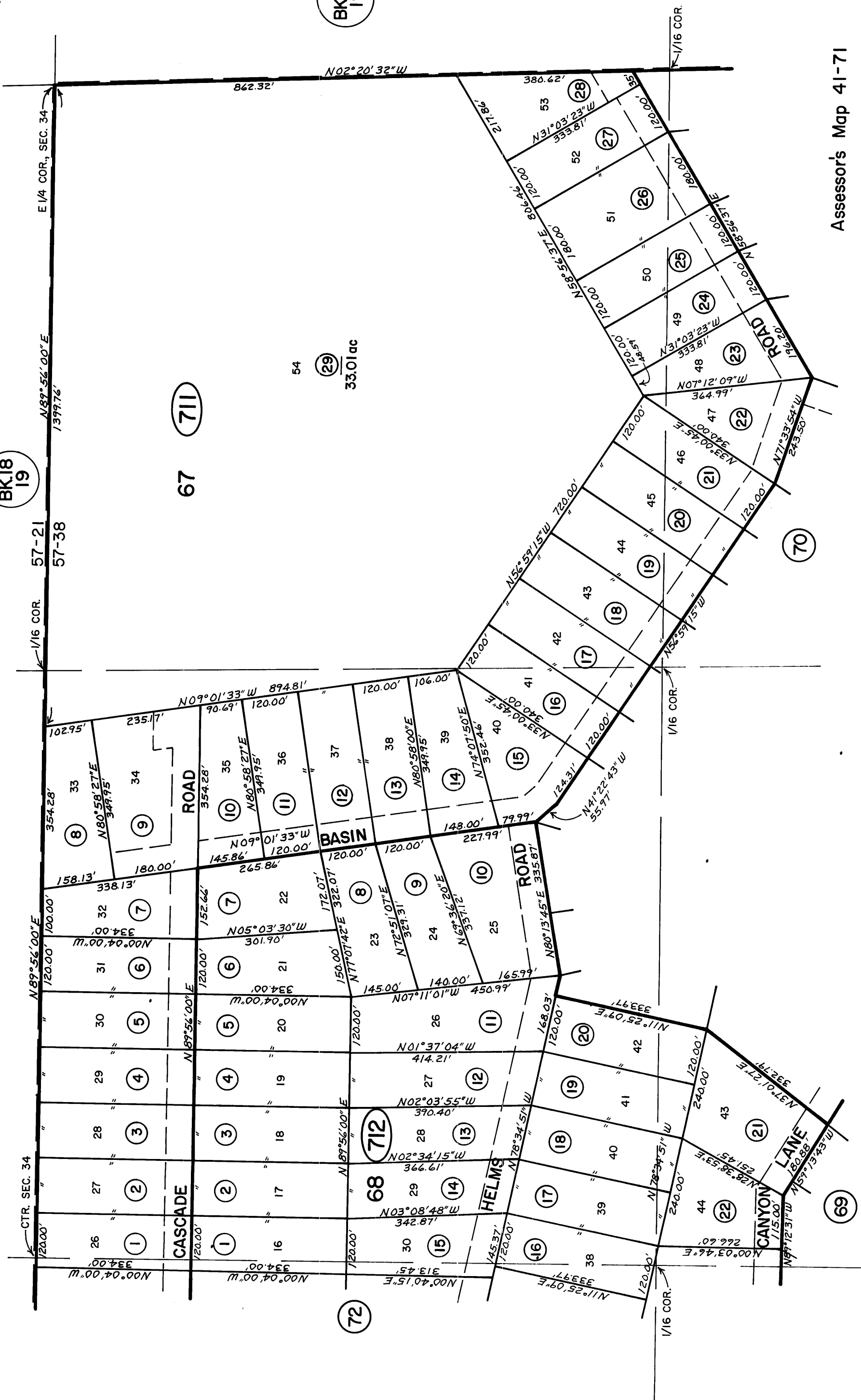
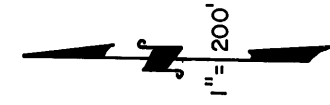


PTN. SE 1/4, SEC. 34, T.40N., R.11E., MDB.&M.

Tax Area Code 57-38

41-71

BK.18
19



67 (711)

BK.18
19

54 (29)
33.01 ac

(72)

Assessor's Map 41-71

County of Modoc, California

1974

NOTE - ASSESSOR'S BLOCK
& LOT NUMBERS
SHOWN IN CIRCLES

California Pines - Unit 5