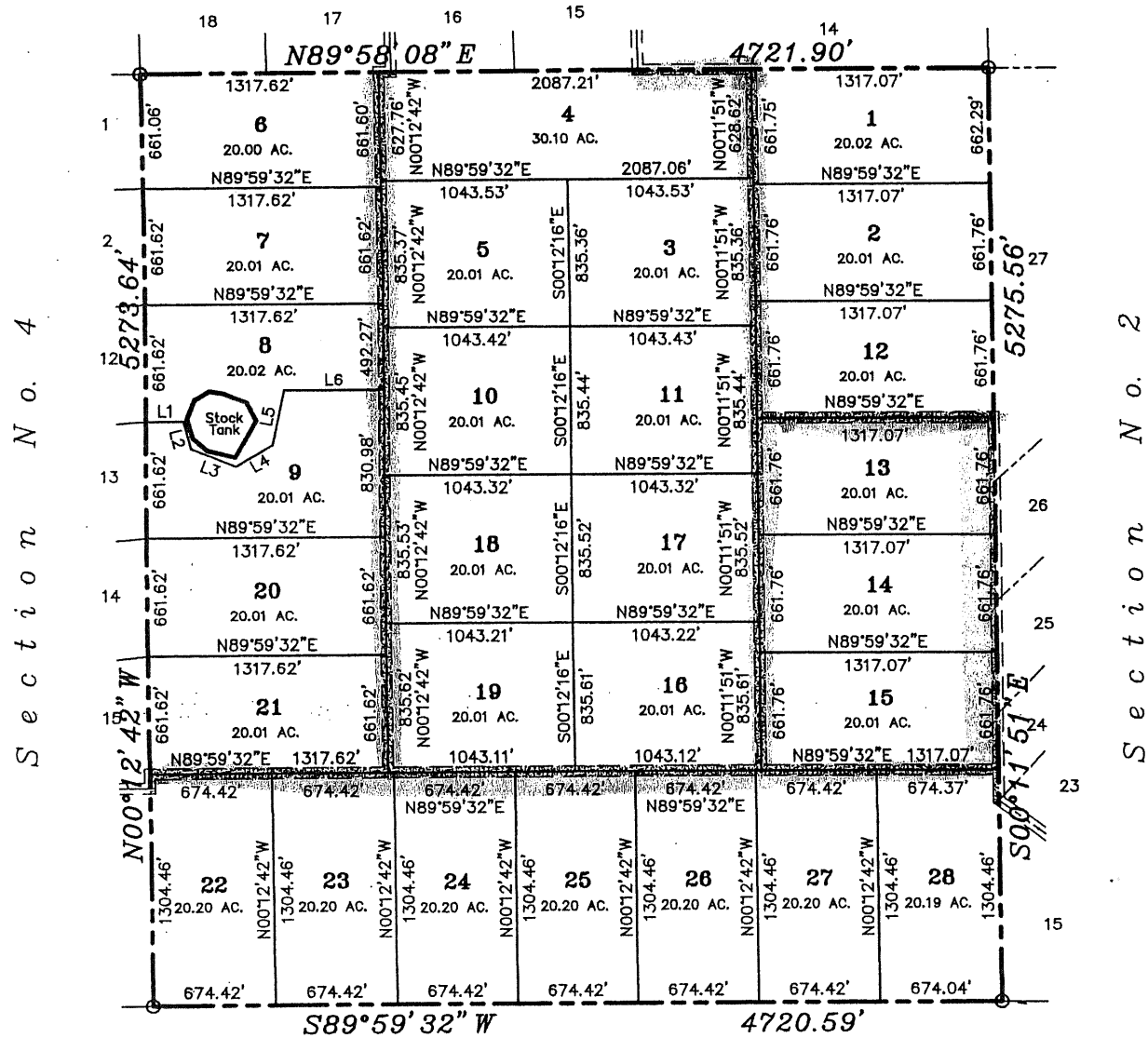




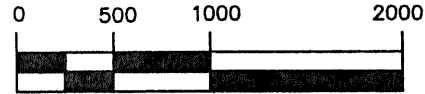
LINE TABLE		
LINE	BEARING	LENGTH
L1	N89°59'32"E	207.88
L2	S14°28'06"E	162.35
L3	S68°00'41"E	269.30
L4	N59°23'54"E	234.56
L5	N11°24'54"E	314.27
L6	N89°59'33"E	554.75

Section No. 19
Block 37



NOTES:

1. All exterior subdivision and Section corners are marked with a 5/8" rebar with cap stamped "LAND-MARK TX 4869 NM11402" unless otherwise noted.
2. All interior lot corners are marked with a 5/8" rebar with cap stamped "LAND-MARK TX 4869 NM11402" unless otherwise noted.
3. Bearings on this plat are based on True North.



1" = 1000'

Graphic Scale

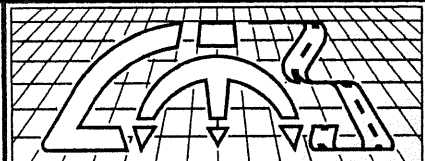
~~PROPOSED ROAD AND DECADATION OF ACCESS & UTILITY EASEMENTS.~~

I hereby certify that the foregoing plat of survey was prepared from records and field notes of an actual survey performed under my direction showing all recorded and visible easements, stock tanks, corrals and water wells and is correct to the best of my knowledge and belief.

[Signature]
Larry L. Drewes, R.P.L.S.
Texas 4869 N.M. 11402

**SUNSET RANCHES
UNIT 619**
BEING SECTION 3, BLOCK 48,
PUBLIC SCHOOL LAND
HUDSPETH COUNTY, TEXAS

CONTAINING 571.683 ACRES±



Land-Mark Professional Surveying, Inc.
1420 Bessemer Drive, Suite 'A'
El Paso, Texas 79936
(915) 598-1300
email: Land-marksurvey.com
"Serving Texas, New Mexico and Arizona"

Job No. 05-10-22039

Scale: 1" = 1000'

Date: DECEMBER 5, 2005.