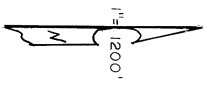
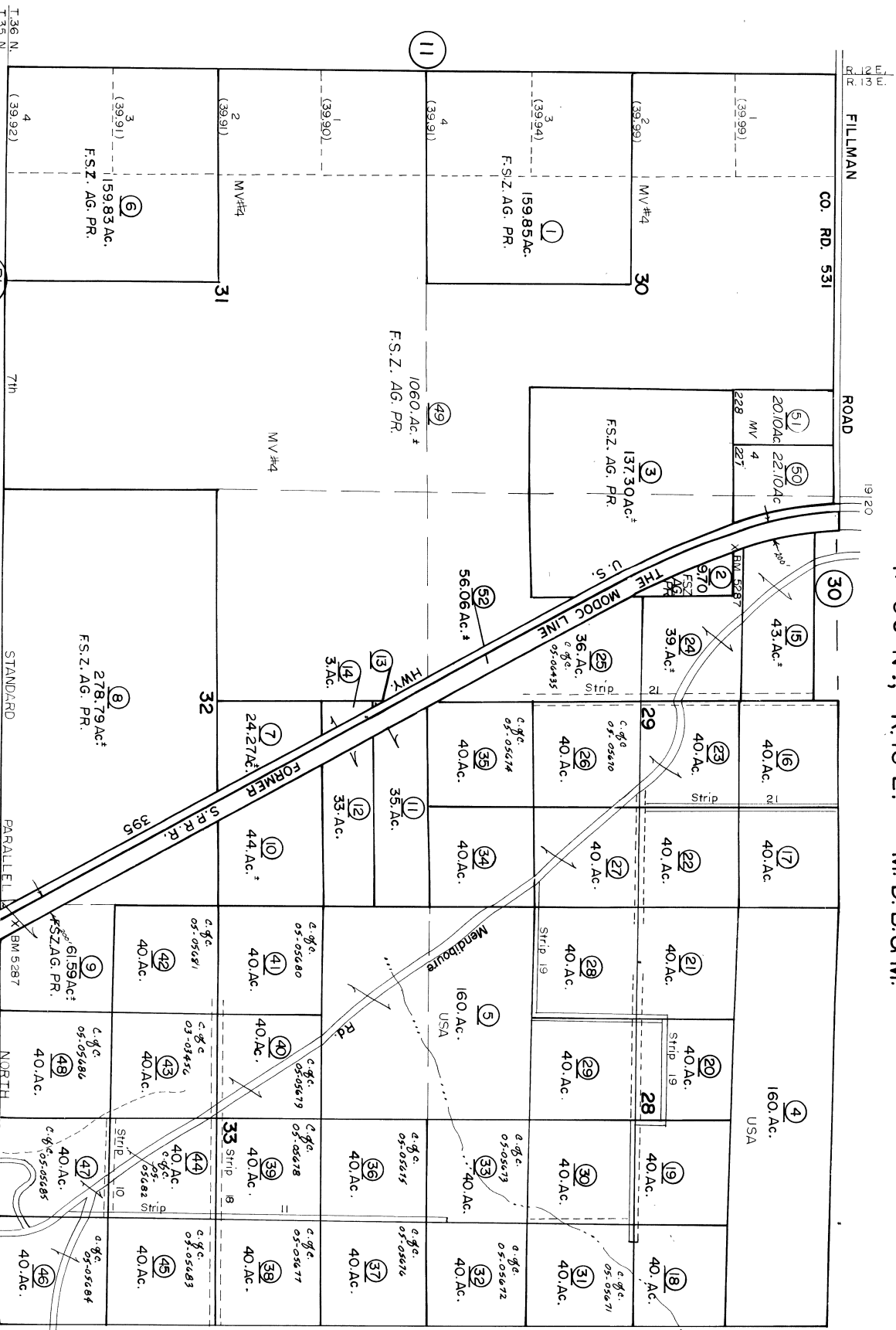


T. 36 N., R. 13 E. M. D. B. 8 M.

TRA-074001 31-31



Acres listed in prepare and checked with available information and is for Assessor's Office use only.

NOTE - Assessor's parcel numbers shown in circles

Assessor's Map Bk. 31 - Pg. 31  
County of Lassen, Calif.

T. 36 N.  
R. 13 E.

R. S. Map Bk. 17 Pg. 4 Allied

Bk. 43 Pg. 5

Bk. 43 Pg. 4