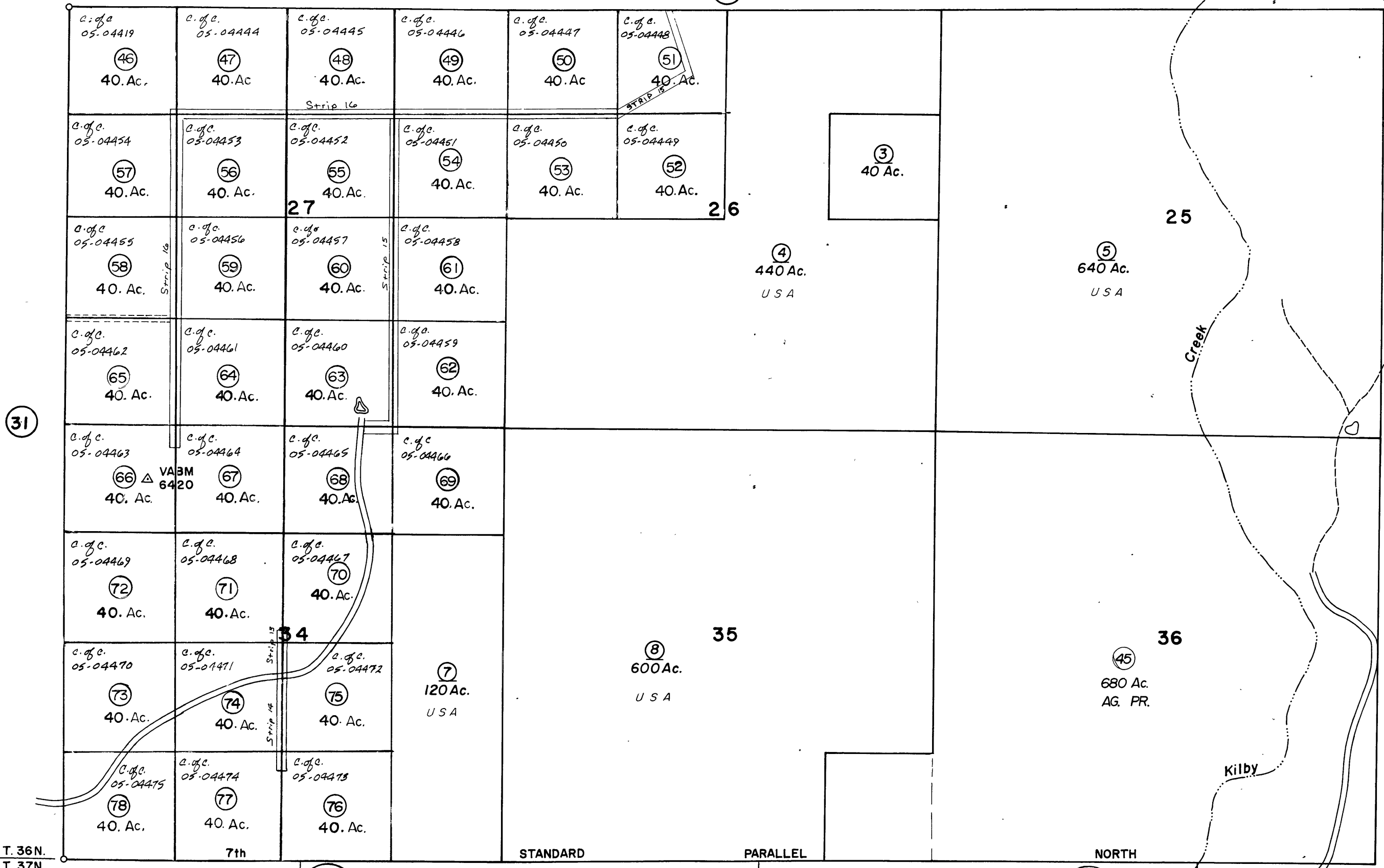


9



31

Bk. 45
Pg. 1

T. 36N.
T. 37N.

Bk. 43
Pg. 5

Bk. 45
Pg. 1

Assessor's Map Bk. 31 - Pg. 13
County of Lassen, Calif.

Acreage listed is prepared and checked with available information and is for Assessor's Office use only.

R.S 17 Pg. 4-6 Allied

NOTE - Assessor's Block Numbers Shown in Ellipses.
Assessor's Parcel Numbers Shown in Circles.