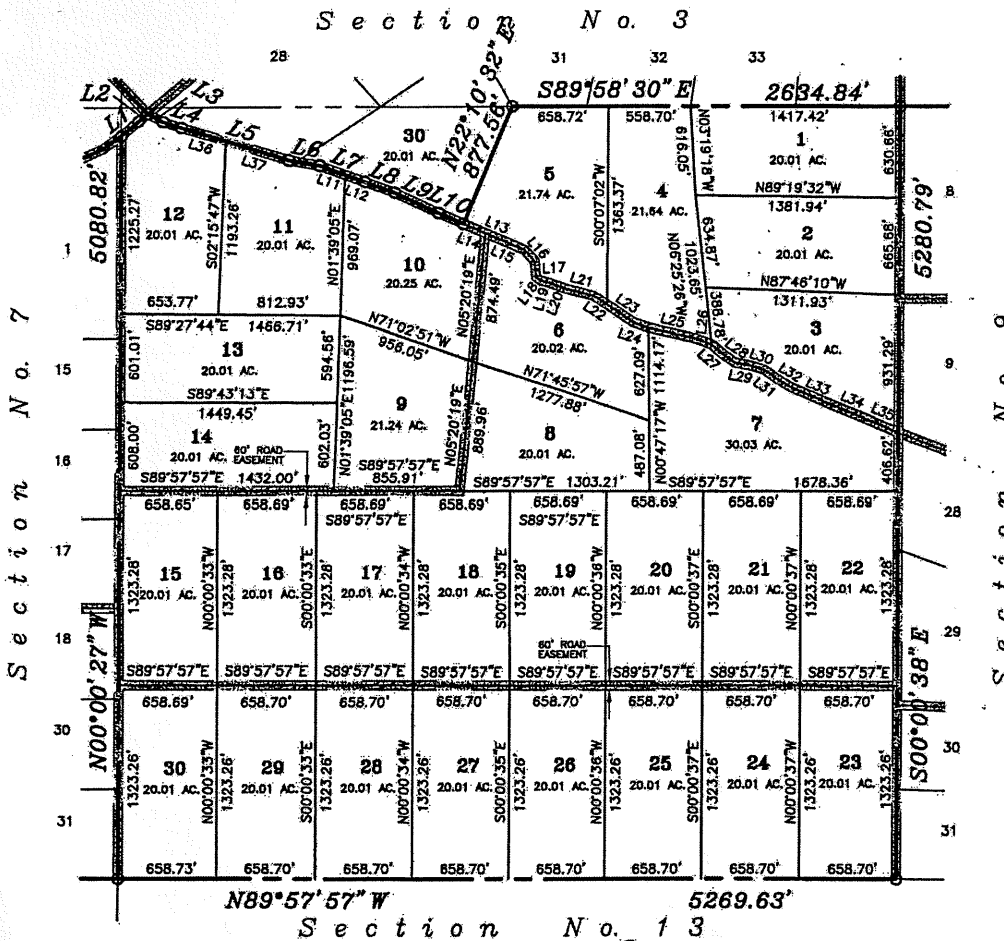


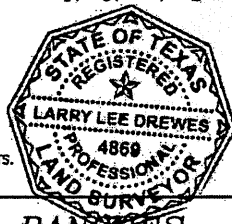


LINE TABLE			LINE TABLE			LINE TABLE			LINE TABLE		
LINE	BEARING	LENGTH	LINE	BEARING	LENGTH	LINE	BEARING	LENGTH	LINE	BEARING	LENGTH
L1	N48°38'59"E	154.72	L11	S69°44'57"E	179.32	L21	S75°37'38"E	205.54	L31	S53°24'39"E	104.41
L2	N48°45'02"E	80.82	L12	S89°44'57"E	143.51	L22	S57°52'54"E	110.83	L32	S58°22'34"E	108.26
L3	S67°55'20"E	118.86	L13	S66°43'09"E	452.40	L23	S56°12'39"E	219.13	L33	S65°20'08"E	316.79
L4	S70°57'38"E	128.85	L14	S66°43'09"E	162.37	L24	S71°25'27"E	109.29	L34	S68°40'35"E	215.74
L5	S72°24'44"E	756.02	L15	S66°43'09"E	290.03	L25	S77°05'54"E	324.87	L35	S67°40'37"E	258.97
L6	S80°07'04"E	206.43	L16	S42°56'08"E	103.88	L26	S69°57'09"E	116.39	L36	S72°24'44"E	313.22
L7	S69°44'57"E	324.85	L17	S06°09'12"E	108.87	L27	S49°07'44"E	92.36	L37	S72°24'44"E	442.80
L8	S69°32'52"E	219.51	L18	S54°26'27"E	41.07	L28	S55°16'31"E	107.65			
L9	S84°03'27"E	328.24	L19	S74°43'49"E	60.82	L29	S79°32'24"E	105.92			
L10	S66°43'09"E	186.33	L20	S69°55'22"E	110.84	L30	S72°05'24"E	102.55			



NOTES:

1. All exterior subdivision and Section corners are marked with a 5/8" rebar with cap stamped "LAND-MARK TX 4869 NM11402" unless otherwise noted.
 2. All interior lot corners are marked with a 5/8" rebar with cap stamped "LAND-MARK TX 4869 NM11402" unless otherwise noted.
 3. Bearings on this plat are based on True North.
- PROPOSED ROAD AND DESIGNATION OF ACCESS & UTILITY EASEMENTS.



Graphic Scale

I hereby certify that the foregoing plat of survey was prepared from records and field notes of an actual survey performed under my direction showing all recorded and visible easements, stock tanks, corrals and water wells and is correct to the best of my knowledge and belief.

Larry L. Drewes
 Larry L. Drewes, R.P.L.S.
 Texas 4869 N.M. 11402

**SUNSET RANCHES
 UNIT 546**
 BEING SECTION 8, BLOCK 47-1/2,
 PUBLIC SCHOOL LAND
 HUDSPETH COUNTY, TEXAS

CONTAINING 615.152 ACRES±



**Land-Mark Professional
 Surveying, Inc.**
 1420 Bessemer Drive, Suite 'A'
 El Paso, Texas 79936
 (915) 598-1300
 email: Land-marksurvey.com
 "Serving Texas, New Mexico
 and Arizona."

Job No. 05-10-21434

Scale: 1" = 1000'

Date: AUGUST 5, 2005.