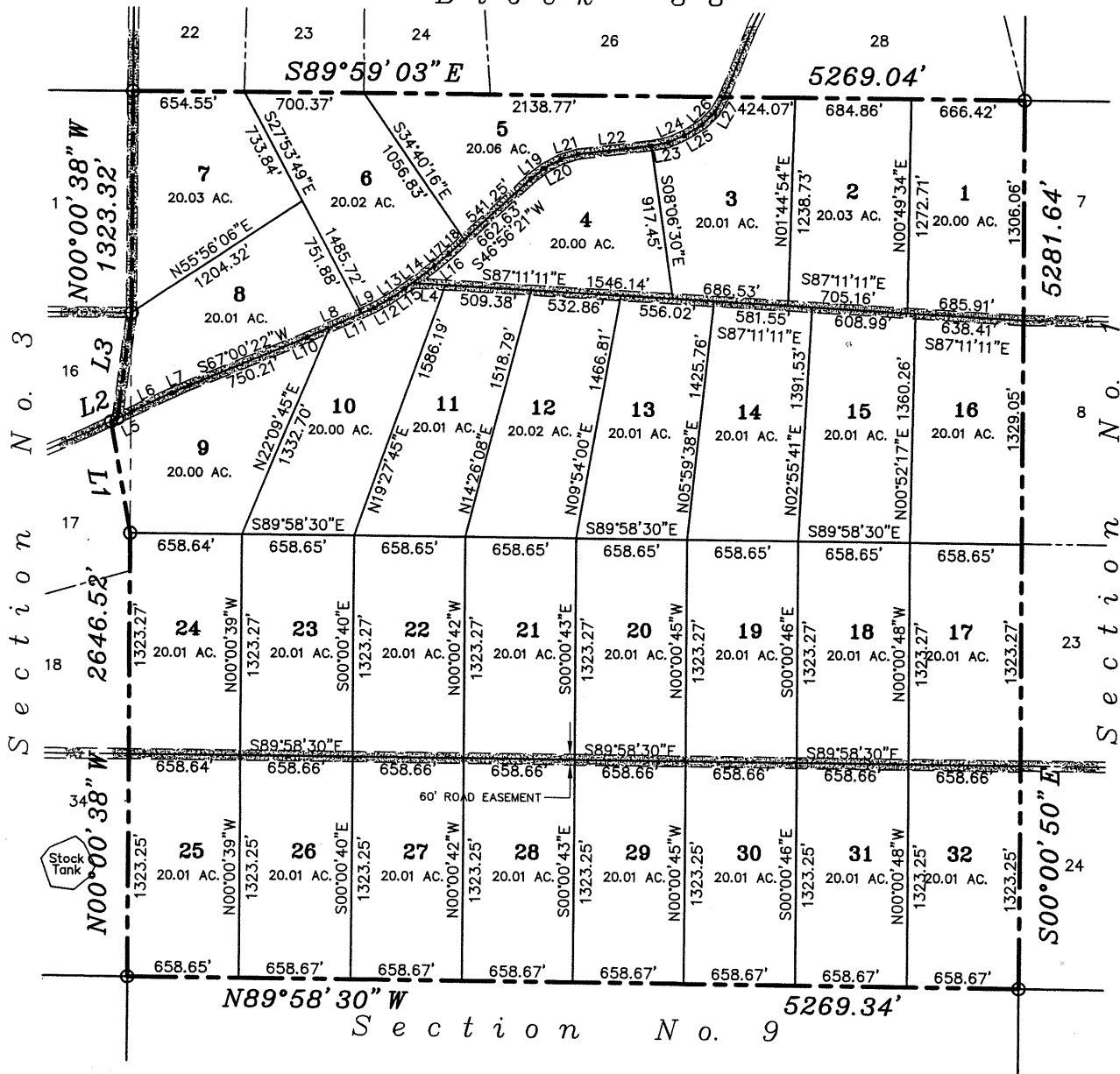




LINE	DIRECTION	LENGTH
L1	N10°18'45"W	669.66
L2	N64°22'20"E	42.81
L3	N07°17'19"E	638.75
L4	S87°11'11"E	196.53
L5	S64°22'20"W	90.00
L6	S63°43'53"W	269.62
L7	S65°35'16"W	107.46
L8	N65°07'39"E	351.73
L9	N65°07'39"E	80.50
L10	N65°07'39"E	144.70
L11	N65°07'39"E	287.53
L12	S60°25'38"W	107.47
L13	S55°05'54"W	111.91
L14	S52°07'11"W	220.14

LINE	DIRECTION	LENGTH
L15	N52°07'11"E	53.22
L16	N52°07'11"E	166.93
L17	S48°54'47"W	113.70
L18	N46°56'21"E	121.38
L19	S52°18'55"W	101.45
L20	S60°46'52"W	108.11
L21	S72°15'10"W	107.98
L22	S82°48'06"W	439.28
L23	S78°46'32"W	103.25
L24	S65°41'36"W	100.88
L25	S58°10'50"W	127.98
L26	S45°50'57"W	103.43
L27	S28°57'56"W	108.75

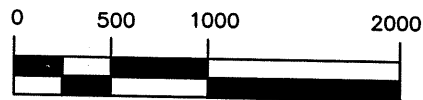
Section No. 22
Block 38



NOTES:

1. All exterior subdivision and Section corners are marked with a 5/8" rebar with cap stamped "LAND-MARK TX 4869 NM11402" unless otherwise noted.
2. All interior lot corners are marked with a 5/8" rebar with cap stamped "LAND-MARK TX 4869 NM11402" unless otherwise noted.
3. Bearings on this plat are based on True North.

PROPOSED ROAD AND DEDICATION OF ACCESS & UTILITY EASEMENTS.



1" = 1000'

Graphic Scale

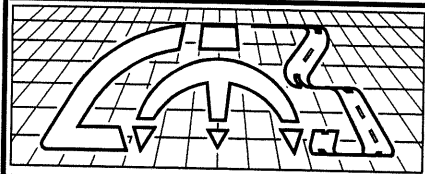
I hereby certify that the foregoing plat of survey was prepared from records and field notes of an actual survey performed under my direction showing all recorded and visible easements, stock tanks, corrals and water wells and is correct to the best of my knowledge and belief.

Larry L. Drewes, R.P.L.S.
Texas 4869 N.M. 11402

**SUNSET RANCHES
UNIT 540**

BEING A PORTION OF
SECTIONS 2 AND 3 BLOCK 47 1/2,
PUBLIC SCHOOL LAND
HUDSPETH COUNTY, TEXAS

CONTAINING 640.375 ACRES±



**Land-Mark Professional
Surveying, Inc.**

1420 Bessemer Drive, Suite 'A'
El Paso, Texas 79936

(915) 598-1300

email: Land-marksurvey.com

"Serving Texas, New Mexico
and Arizona"

Job No. 05-10-21434

Scale: 1" = 1000'

Date: JULY 20, 2005.