

TIMBERON SUBDIVISION

UNIT -12

PORTION OF SECTIONS 24 & 25,
T-19-S, R-12-E, N.M.P.M
OTERO COUNTY, NEW MEXICO

SCALE: 1" = 100' DATE: FEB. 5, 1973

"STATE OF NEW MEXICO
COUNTY OF OTERO

I, Frankie Cleary, County Clerk do hereby
certify the foregoing to be a true and correct copy of the
original filed in my office, the 7 day of February,
1973, in Plat Book 16, Page 37 of 1973.
WITNESS my hand and the seal of my said office this
7 day of February, 1973.

By Frankie Cleary
County Clerk

Deputy

BLOCK-103

PARK

PARK
209
17.858 Ac.

SALMON

DRIVE

BLOCK-103

TROUT

DRIVE

BLOCK-113

MACKEREL

DRIVE

BLOCK-116

MARLIN

DRIVE

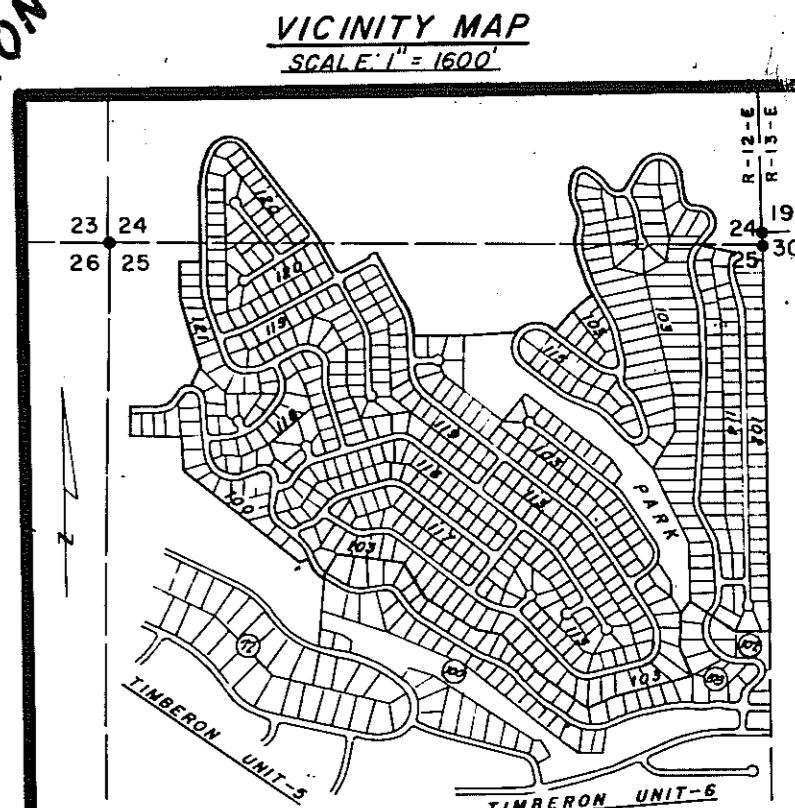
BLOCK-117

TROUT

DRIVE

BLOCK-103

BLOCK-103



Note:
All Utility Easements
Are 10' Wide Unless
Otherwise Indicated

Sheet No. One

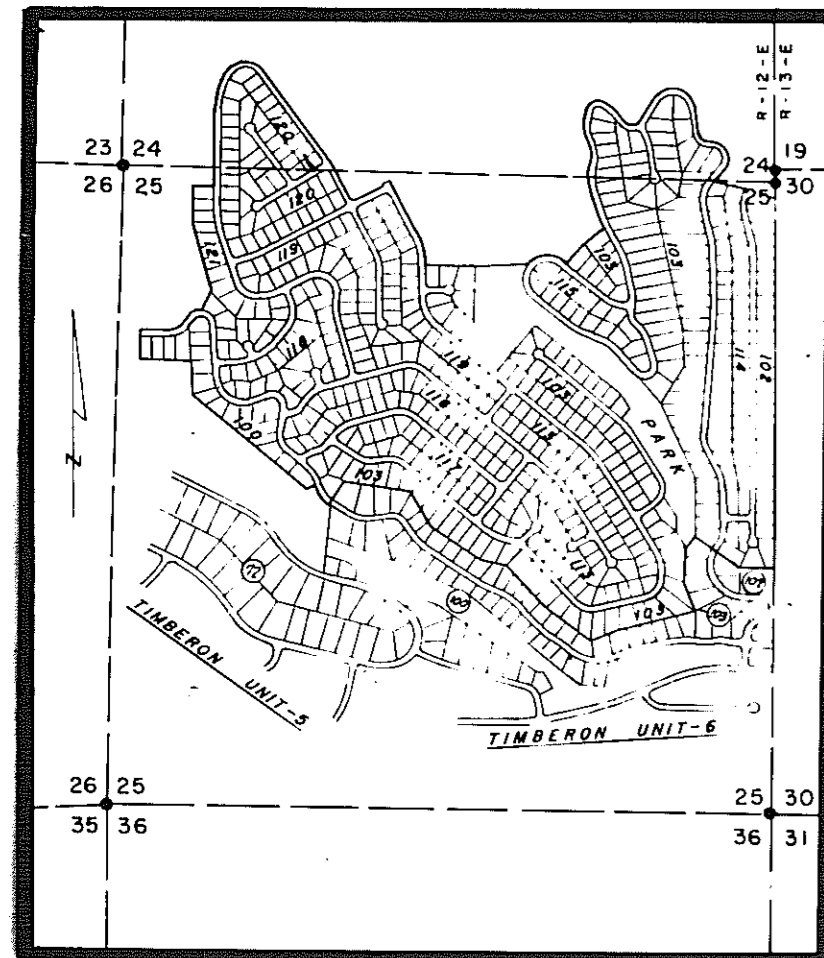
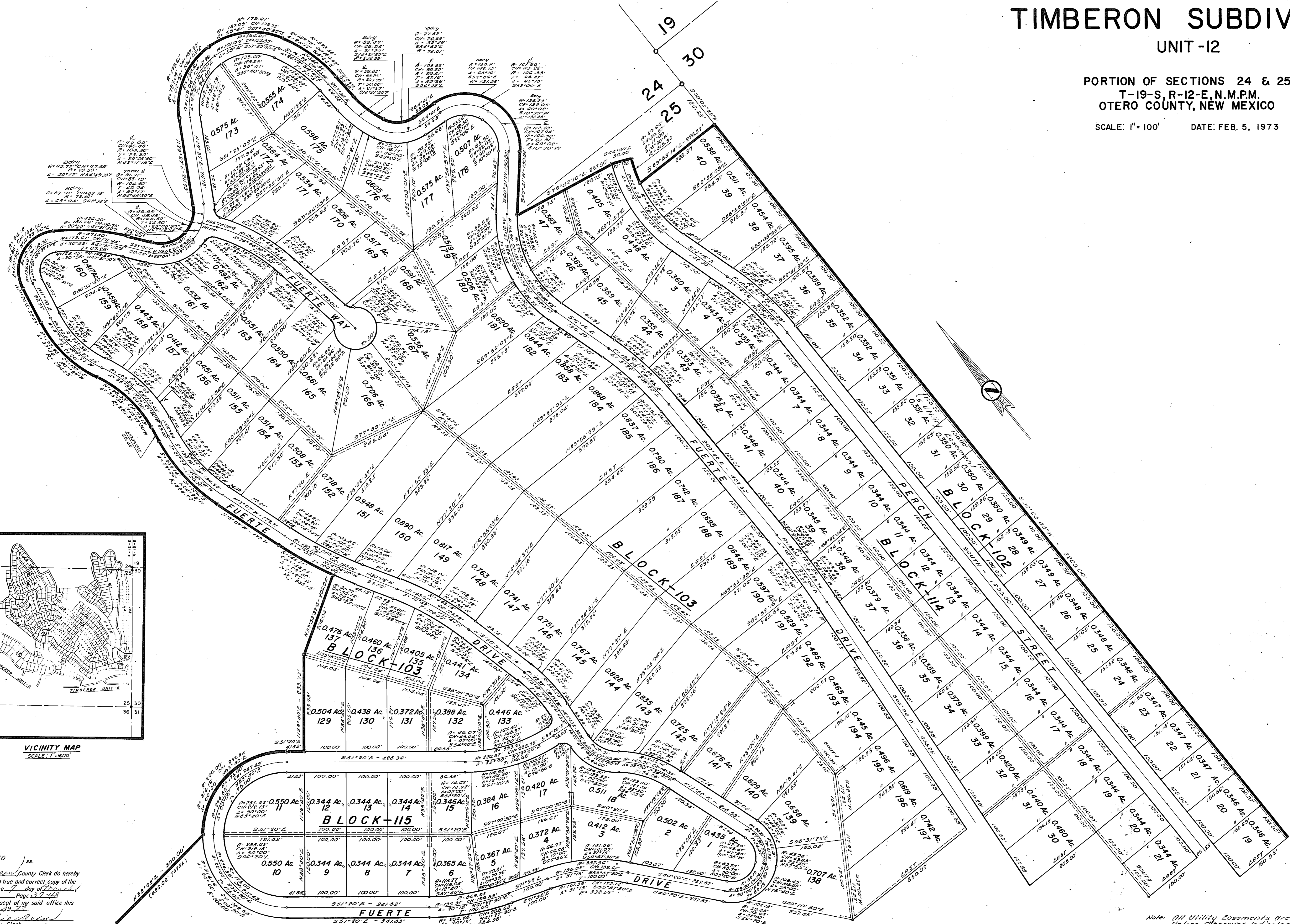
TIMBERON SUB #12
BK 16 PG 39-40 2 OF 6

TIMBERON SUBDIVISION

UNIT -12

PORTION OF SECTIONS 24 & 25,
T-19-S, R-12-E, N.M.P.M.
OTERO COUNTY, NEW MEXICO

SCALE: 1" = 100' DATE: FEB. 5, 1973



VICINITY MAP
SCALE: 1" = 800'

"STATE OF NEW MEXICO
COUNTY OF OTERO
I, Franklin A. Allen, County Clerk do hereby
certify the foregoing to be a true and correct copy of the
original filed in my office the 7 day of February,
1973, in Plat Book 16, Page 37-42
WITNESS my hand and the seal of my said office this
day of February, 1973.
County Clerk
By Colby Lamb Deputy

BASIL SMITH ENGINEERING CO. - EL PASO, TEXAS

Note: All Utility Easements Are 10' Wide
Unless Otherwise Indicated.
Sheet No. Two

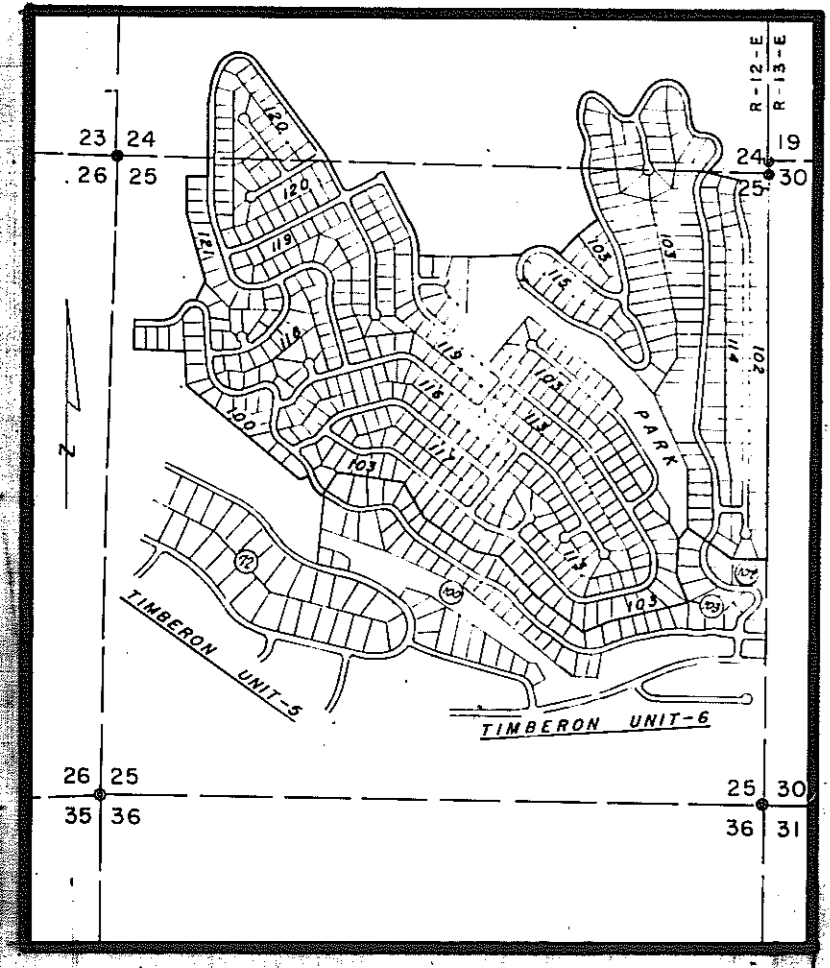
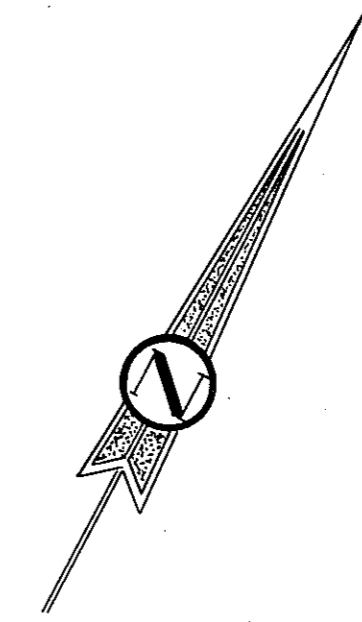
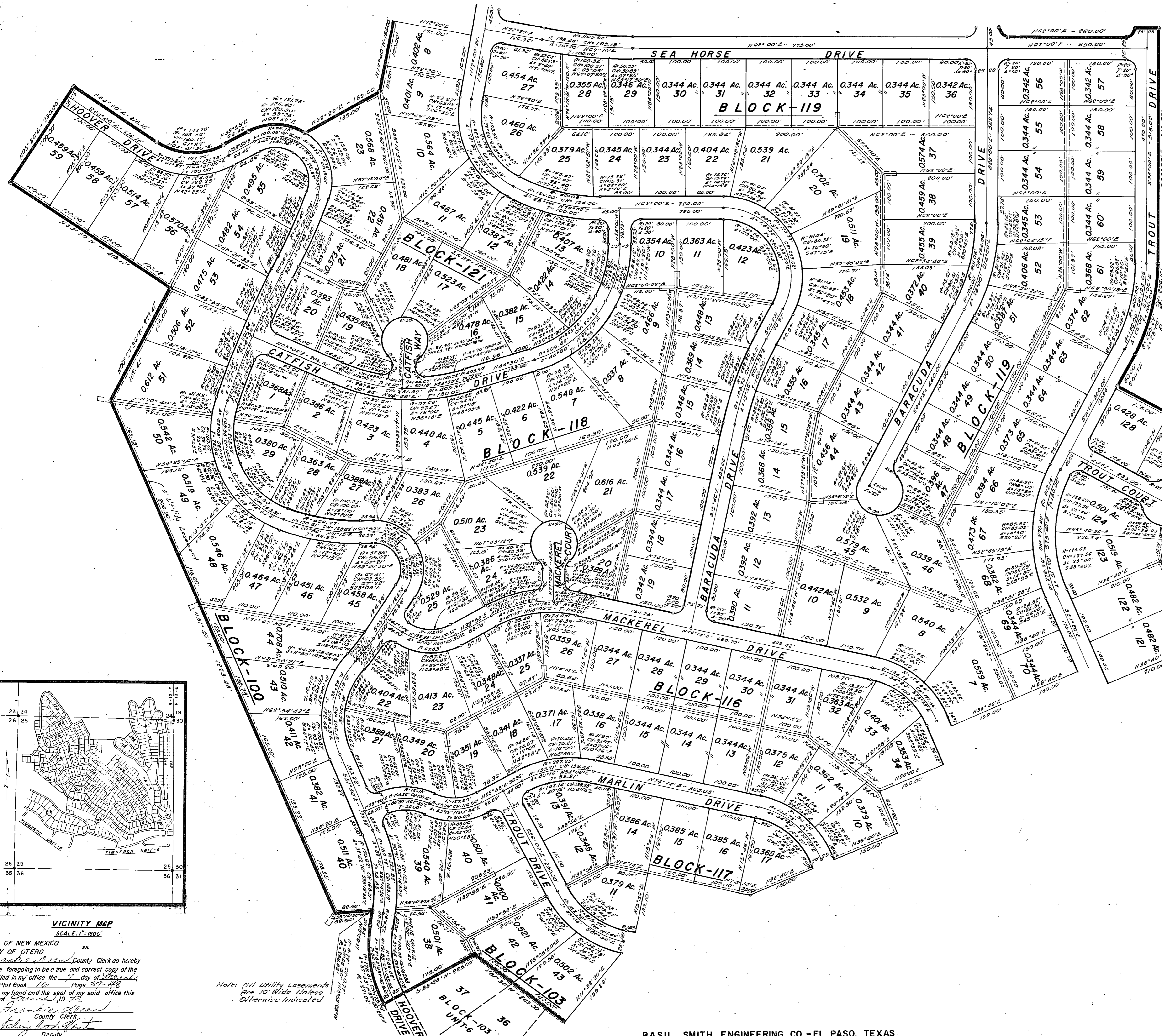
TIMBERON SUB #12
BK 16 PG 41-42 3 OF 6

TIMBERON SUBDIVISION

UNIT -12

PORTION OF SECTIONS 24 & 25,
T-19-S, R-12-E, N.M.P.M.
OTERO COUNTY, NEW MEXICO

SCALE: 1" = 100' DATE: FEB. 5, 1973



VICINITY MAP
SCALE: 1" = 1600'

STATE OF NEW MEXICO
 COUNTY OF OTERO ss.
 I, Frankie Allen, County Clerk do hereby
 certify the foregoing to be a true and correct copy of the
 original filed in my office the 7 day of March,
 1973, in Plot Book 16 Page 37-48
 WITNESS my hand and the seal of my said office this
7 day of March, 1973.
Frankie Allen
 County Clerk
 By Colony West
 Deputy

Note: All Utility Easements
 are 10' Wide Unless
 Otherwise Indicated

BASIL SMITH ENGINEERING CO. - EL PASO, TEXAS

Sheet No Three

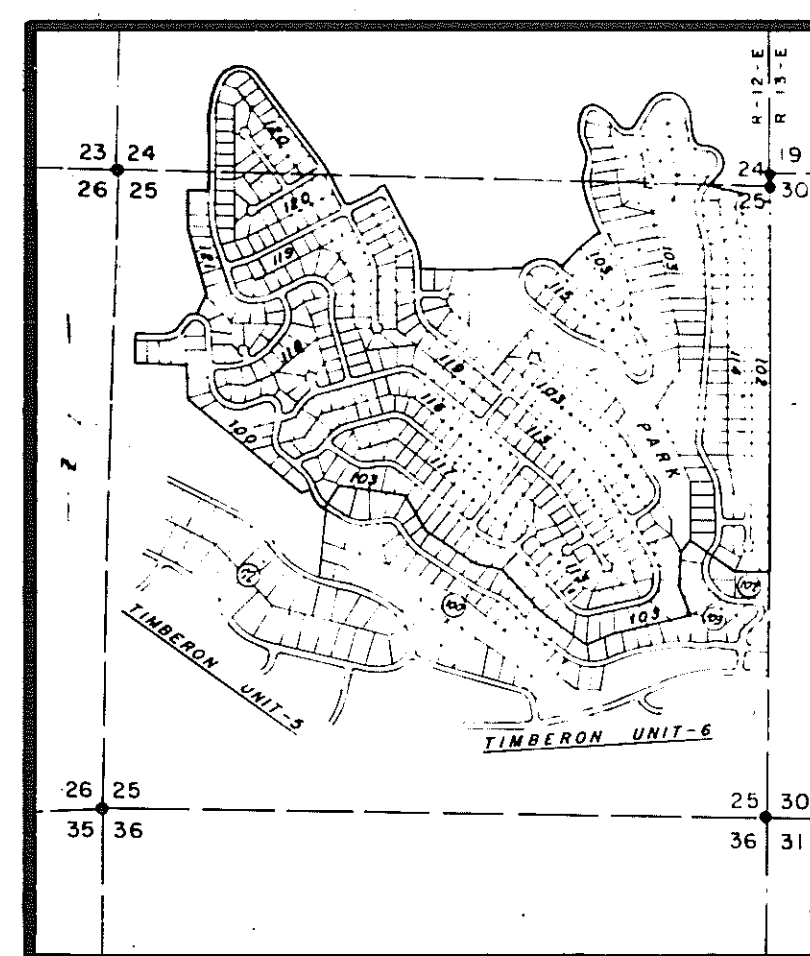
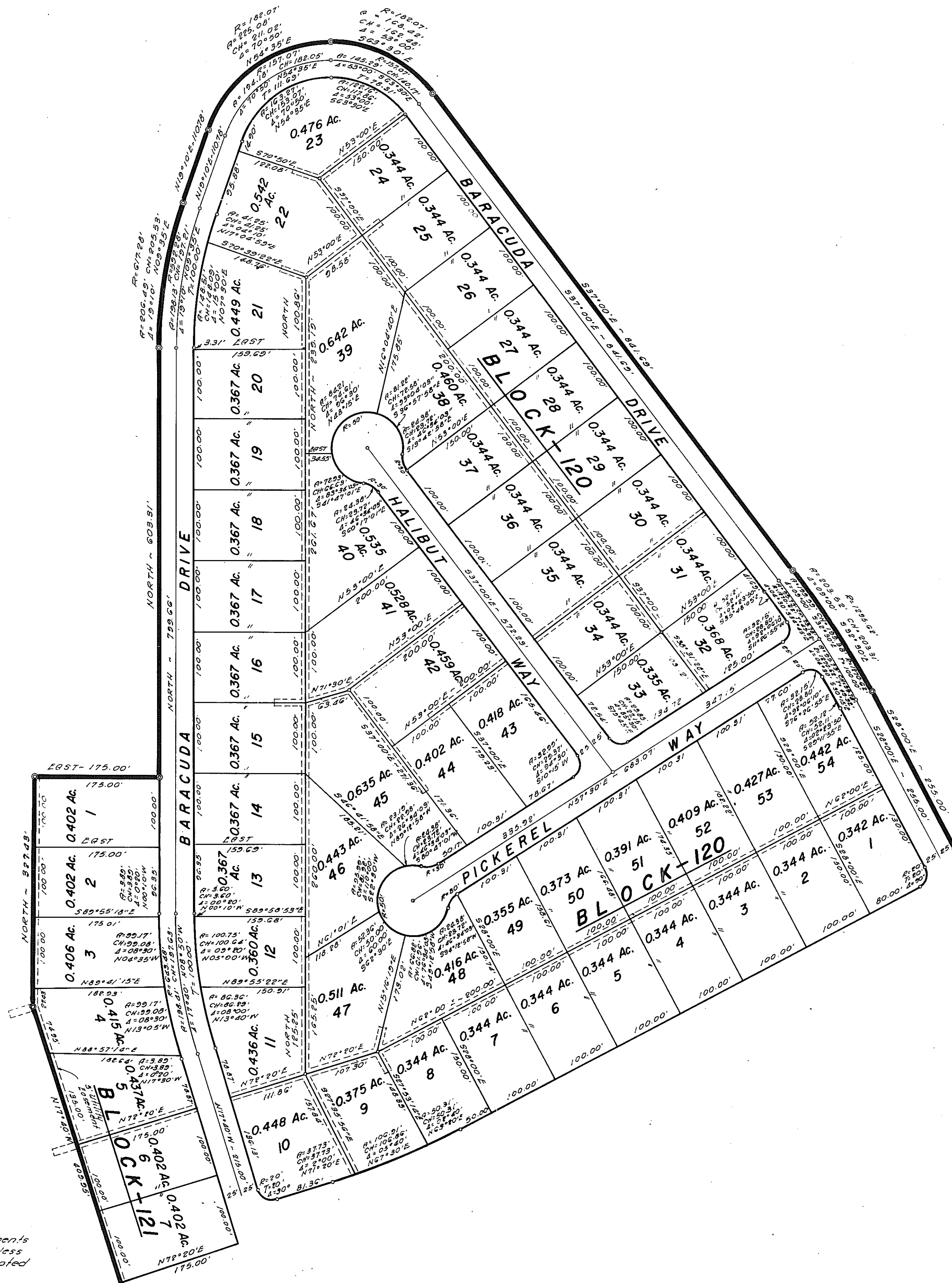
TIMBERON SUB #12
 BK 16 PG 43-44
 4 OF 6

TIMBERON SUBDIVISION

UNIT -12

PORTION OF SECTIONS 24 & 25,
T-19-S, R-12-E, N.M.P.M.
OTERO COUNTY, NEW MEXICO

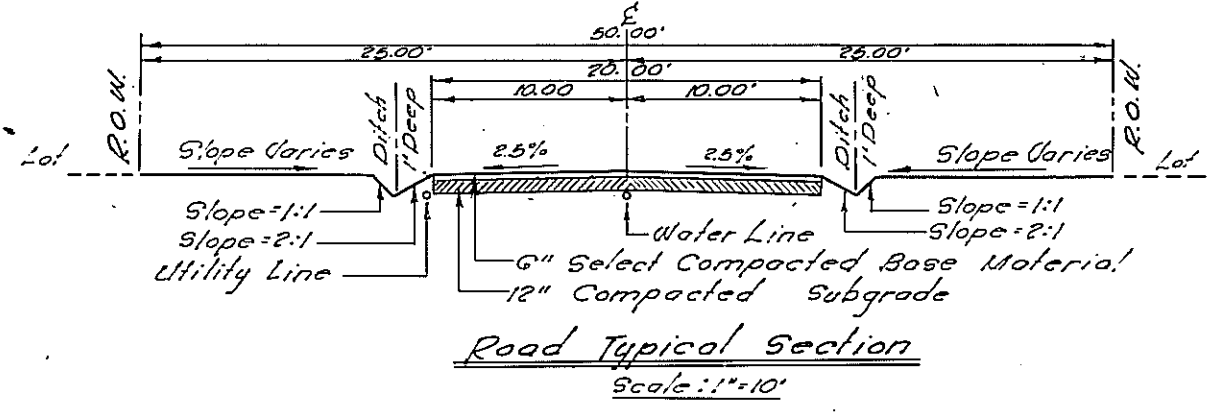
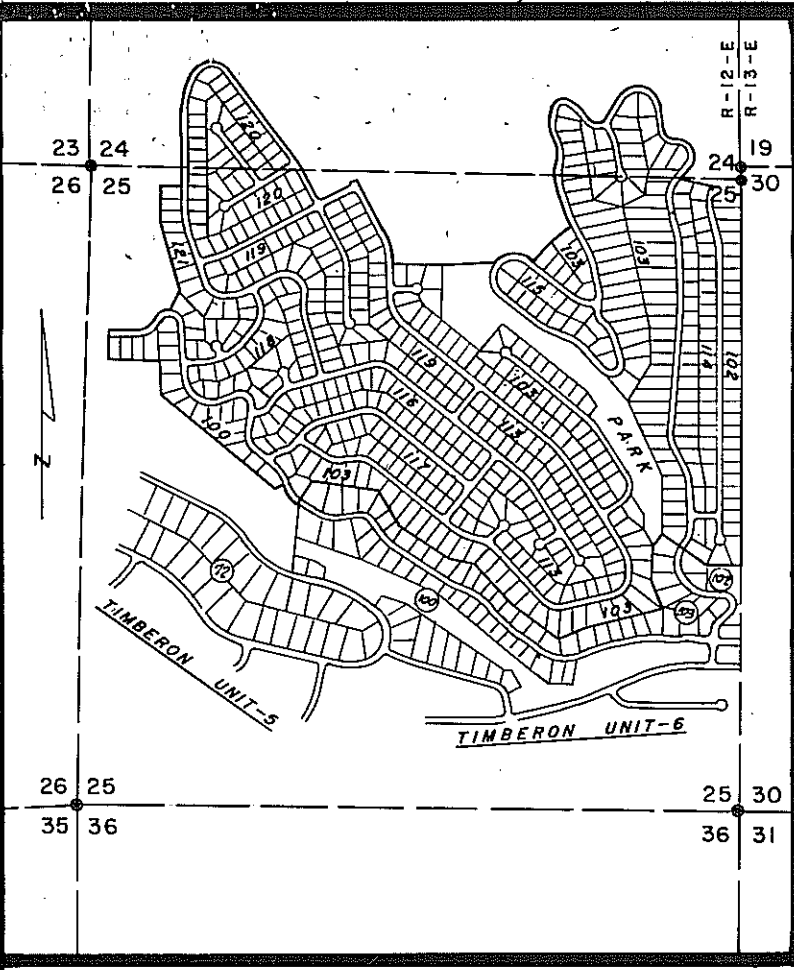
SCALE: 1" = 100' DATE: FEB. 5, 1973



VICINITY MAP
SCALE: 1" = 1600'

"STATE OF NEW MEXICO
COUNTY OF OTERO
I, Frank A. Allen County Clerk do hereby
certify the foregoing to be a true and correct copy of the
original filed in my office the 7 day of February
1973 in Plot Book 66 Page 37-48
WITNESS my hand and the seal of my said office this
7 day of February 1973
Frank A. Allen
County Clerk
By Colony West
Deputy

Note: All Utility Easements
Are 10' Wide Unless
Otherwise Indicated



TIMBERON SUBDIVISION

UNIT-12

614 LOTS — CONTAINING 330.500 ACRES
PORTION OF SECTIONS 24 & 25,
T-19-S, R-12-E, N.M.P.M.
OTERO COUNTY, NEW MEXICO

SCALE: 1" = 200' DATE: FEB. 5, 1973

Dedication
State of New Mexico
County of Otero
This is to certify that the above Plot of Blocks 100, 102, 103, 104, 105, 106, 107, 108, 109, 110, 111, 112, 113, 114, 115, 116, 117, 118, 119, 120, 121, 122, 123, 124, 125, 126, 127, 128, 129, 130, 131, 132, 133, 134, 135, 136, 137, 138, 139, 140, 141, 142, 143, 144, 145, 146, 147, 148, 149, 150, 151, 152, 153, 154, 155, 156, 157, 158, 159, 160, 161, 162, 163, 164, 165, 166, 167, 168, 169, 170, 171, 172, 173, 174, 175, 176, 177, 178, 179, 180, 181, 182, 183, 184, 185, 186, 187, 188, 189, 190, 191, 192, 193, 194, 195, 196, 197, 198, 199, 200, 201, 202, 203, 204, 205, 206, 207, 208, 209, 210, 211, 212, 213, 214, 215, 216, 217, 218, 219, 220, 221, 222, 223, 224, 225, 226, 227, 228, 229, 230, 231, 232, 233, 234, 235, 236, 237, 238, 239, 240, 241, 242, 243, 244, 245, 246, 247, 248, 249, 250, 251, 252, 253, 254, 255, 256, 257, 258, 259, 260, 261, 262, 263, 264, 265, 266, 267, 268, 269, 270, 271, 272, 273, 274, 275, 276, 277, 278, 279, 280, 281, 282, 283, 284, 285, 286, 287, 288, 289, 290, 291, 292, 293, 294, 295, 296, 297, 298, 299, 300, 301, 302, 303, 304, 305, 306, 307, 308, 309, 310, 311, 312, 313, 314, 315, 316, 317, 318, 319, 320, 321, 322, 323, 324, 325, 326, 327, 328, 329, 330, 331, 332, 333, 334, 335, 336, 337, 338, 339, 340, 341, 342, 343, 344, 345, 346, 347, 348, 349, 350, 351, 352, 353, 354, 355, 356, 357, 358, 359, 360, 361, 362, 363, 364, 365, 366, 367, 368, 369, 370, 371, 372, 373, 374, 375, 376, 377, 378, 379, 380, 381, 382, 383, 384, 385, 386, 387, 388, 389, 390, 391, 392, 393, 394, 395, 396, 397, 398, 399, 400, 401, 402, 403, 404, 405, 406, 407, 408, 409, 410, 411, 412, 413, 414, 415, 416, 417, 418, 419, 420, 421, 422, 423, 424, 425, 426, 427, 428, 429, 430, 431, 432, 433, 434, 435, 436, 437, 438, 439, 440, 441, 442, 443, 444, 445, 446, 447, 448, 449, 450, 451, 452, 453, 454, 455, 456, 457, 458, 459, 460, 461, 462, 463, 464, 465, 466, 467, 468, 469, 470, 471, 472, 473, 474, 475, 476, 477, 478, 479, 480, 481, 482, 483, 484, 485, 486, 487, 488, 489, 490, 491, 492, 493, 494, 495, 496, 497, 498, 499, 500, 501, 502, 503, 504, 505, 506, 507, 508, 509, 510, 511, 512, 513, 514, 515, 516, 517, 518, 519, 520, 521, 522, 523, 524, 525, 526, 527, 528, 529, 530, 531, 532, 533, 534, 535, 536, 537, 538, 539, 540, 541, 542, 543, 544, 545, 546, 547, 548, 549, 550, 551, 552, 553, 554, 555, 556, 557, 558, 559, 560, 561, 562, 563, 564, 565, 566, 567, 568, 569, 570, 571, 572, 573, 574, 575, 576, 577, 578, 579, 580, 581, 582, 583, 584, 585, 586, 587, 588, 589, 590, 591, 592, 593, 594, 595, 596, 597, 598, 599, 600, 601, 602, 603, 604, 605, 606, 607, 608, 609, 610, 611, 612, 613, 614, 615, 616, 617, 618, 619, 620, 621, 622, 623, 624, 625, 626, 627, 628, 629, 630, 631, 632, 633, 634, 635, 636, 637, 638, 639, 640, 641, 642, 643, 644, 645, 646, 647, 648, 649, 650, 651, 652, 653, 654, 655, 656, 657, 658, 659, 660, 661, 662, 663, 664, 665, 666, 667, 668, 669, 670, 671, 672, 673, 674, 675, 676, 677, 678, 679, 680, 681, 682, 683, 684, 685, 686, 687, 688, 689, 690, 691, 692, 693, 694, 695, 696, 697, 698, 699, 700, 701, 702, 703, 704, 705, 706, 707, 708, 709, 710, 711, 712, 713, 714, 715, 716, 717, 718, 719, 720, 721, 722, 723, 724, 725, 726, 727, 728, 729, 730, 731, 732, 733, 734, 735, 736, 737, 738, 739, 740, 741, 742, 743, 744, 745, 746, 747, 748, 749, 750, 751, 752, 753, 754, 755, 756, 757, 758, 759, 760, 761, 762, 763, 764, 765, 766, 767, 768, 769, 770, 771, 772, 773, 774, 775, 776, 777, 778, 779, 780, 781, 782, 783, 784, 785, 786, 787, 788, 789, 790, 791, 792, 793, 794, 795, 796, 797, 798, 799, 800, 801, 802, 803, 804, 805, 806, 807, 808, 809, 810, 811, 812, 813, 814, 815, 816, 817, 818, 819, 820, 821, 822, 823, 824, 825, 826, 827, 828, 829, 830, 831, 832, 833, 834, 835, 836, 837, 838, 839, 840, 841, 842, 843, 844, 845, 846, 847, 848, 849, 850, 851, 852, 853, 854, 855, 856, 857, 858, 859, 860, 861, 862, 863, 864, 865, 866, 867, 868, 869, 870, 871, 872, 873, 874, 875, 876, 877, 878, 879, 880, 881, 882, 883, 884, 885, 886, 887, 888, 889, 890, 891, 892, 893, 894, 895, 896, 897, 898, 899, 900, 901, 902, 903, 904, 905, 906, 907, 908, 909, 910, 911, 912, 913, 914, 915, 916, 917, 918, 919, 920, 921, 922, 923, 924, 925, 926, 927, 928, 929, 930, 931, 932, 933, 934, 935, 936, 937, 938, 939, 940, 941, 942, 943, 944, 945, 946, 947, 948, 949, 950, 951, 952, 953, 954, 955, 956, 957, 958, 959, 960, 961, 962, 963, 964, 965, 966, 967, 968, 969, 970, 971, 972, 973, 974, 975, 976, 977, 978, 979, 980, 981, 982, 983, 984, 985, 986, 987, 988, 989, 990, 991, 992, 993, 994, 995, 996, 997, 998, 999, 1000.

Acknowledgement
State of New Mexico
County of Otero
The foregoing instrument was acknowledged before me by Johnny F. Mobley and Richard A. Parsons, being the President and Assistant Secretary/Treasurer respectively of North American Land Developments, Inc., in behalf of said Inc. on this 12th day of FEB. 1973.

Notary Public
My Commission expires 9-30-76

Filing
State of New Mexico
County of Otero
Filed for Record in the Office of County Clerk and Recorder of the County of Otero, New Mexico, at 4:30 P.M., this 7th day of March, 1973.

Reception No. 93670
By Frankie Allen
County Clerk
Approved: Jan E. Under
Notary Public

Engineer's Certificate
I, Basil R. Smith, Registered Professional Civil Engineer and Land Surveyor, certify this to be a true and correct copy of the original filed in my office the 7th day of March, 1973, in Plat Book 16, Page 27-48.

Approved this 25th day of Feb. 1973.
John E. Craig
County Surveyor M157

Approved this 27th day of Feb. 1973.
John E. Craig
County Surveyor M157

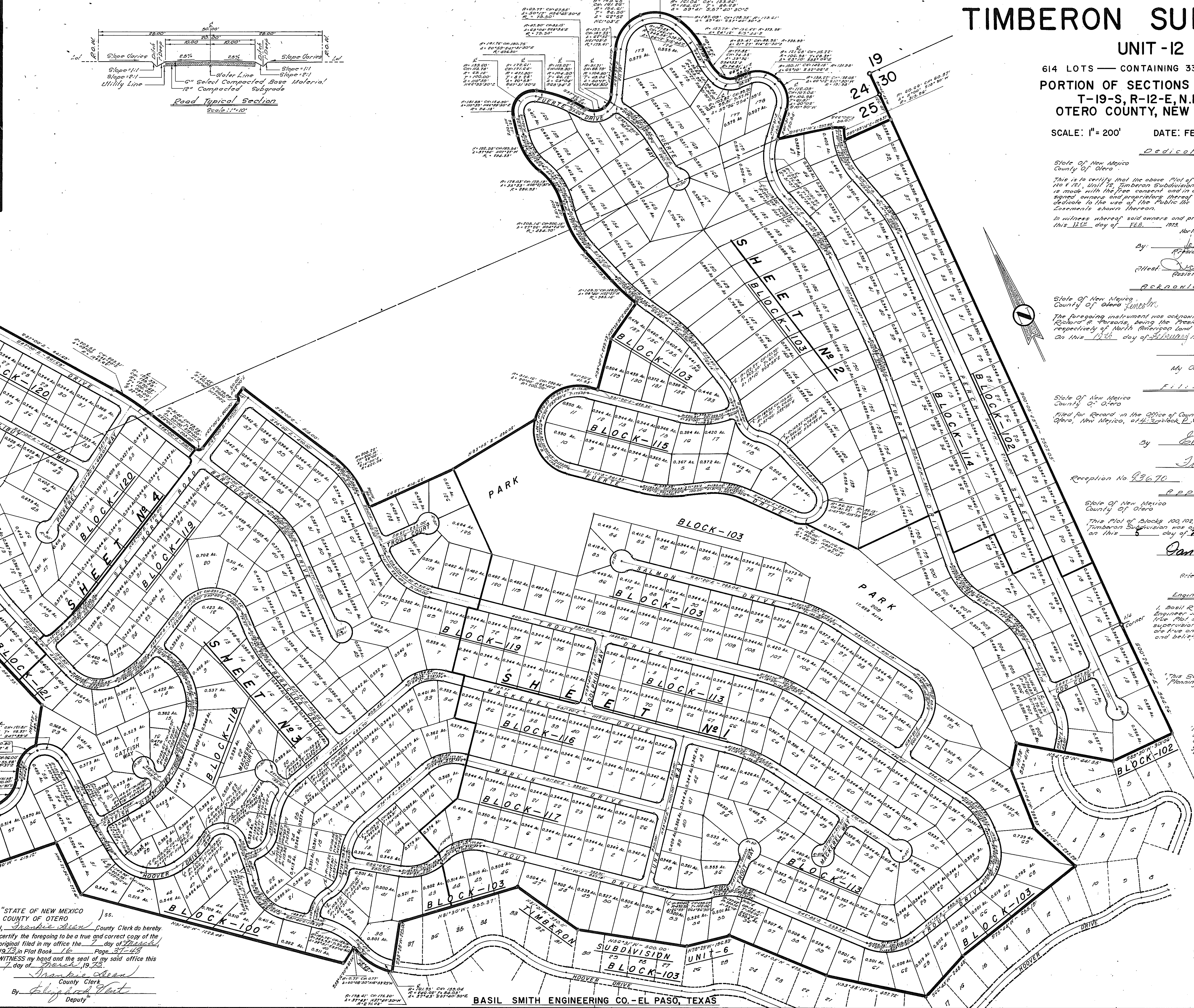
Approved this 27th day of Feb. 1973.
John E. Craig
County Surveyor M157

Approved this 27th day of Feb. 1973.
John E. Craig
County Surveyor M157

Approved this 27th day of Feb. 1973.
John E. Craig
County Surveyor M157

Approved this 27th day of Feb. 1973.
John E. Craig
County Surveyor M157

"STATE OF NEW MEXICO
COUNTY OF OTERO
I, Frankie Allen, County Clerk do hereby certify the foregoing to be a true and correct copy of the original filed in my office the 7th day of March, 1973, in Plat Book 16, Page 27-48.
WITNESS my hand and the seal of my said office this 7th day of March, 1973.
Frankie Allen
County Clerk
By Elizabeth Hart
Deputy



Dedication
State of New Mexico
County of Otero
This is to certify that the above Plot of Blocks 100, 102, 103, 104, 105, 106, 107, 108, 109, 110, 111, 112, 113, 114, 115, 116, 117, 118, 119, 120, 121, 122, 123, 124, 125, 126, 127, 128, 129, 130, 131, 132, 133, 134, 135, 136, 137, 138, 139, 140, 141, 142, 143, 144, 145, 146, 147, 148, 149, 150, 151, 152, 153, 154, 155, 156, 157, 158, 159, 160, 161, 162, 163, 164, 165, 166, 167, 168, 169, 170, 171, 172, 173, 174, 175, 176, 177, 178, 179, 180, 181, 182, 183, 184, 185, 186, 187, 188, 189, 190, 191, 192, 193, 194, 195, 196, 197, 198, 199, 200, 201, 202, 203, 204, 205, 206, 207, 208, 209, 210, 211, 212, 213, 214, 215, 216, 217, 218, 219, 220, 221, 222, 223, 224, 225, 226, 227, 228, 229, 230, 231, 232, 233, 234, 235, 236, 237, 238, 239, 240, 241, 242, 243, 244, 245, 246, 247, 248, 249, 250, 251, 252, 253, 254, 255, 256, 257, 258, 259, 260, 261, 262, 263, 264, 265, 266, 267, 268, 269, 270, 271, 272, 273, 274, 275, 276, 277, 278, 279, 280, 281, 282, 283, 284, 285, 286, 287, 288, 289, 290, 291, 292, 293, 294, 295, 296, 297, 298, 299, 300, 301, 302, 303, 304, 305, 306, 307, 308, 309, 310, 311, 312, 313, 314, 315, 316, 317, 318, 319, 320, 321, 322, 323, 324, 325, 326, 327, 328, 329, 330, 331, 332, 333, 334, 335, 336, 337, 338, 339, 340, 341, 342, 343, 344, 345, 346, 347, 348, 349, 350, 351, 352, 353, 354, 355, 356, 357, 358, 359, 360, 361, 362, 363, 364, 365, 366, 367, 368, 369, 370, 371, 372, 373, 374, 375, 376, 377, 378, 379, 380, 381, 382, 383, 384, 385, 386, 387, 388, 389, 390, 391, 392, 393, 394, 395, 396, 397, 398, 399, 400, 401, 402, 403, 404, 405, 406, 407, 408, 409, 410, 411, 412, 413, 414, 415, 416, 417, 418, 419, 420, 421, 422, 423, 424, 425, 426, 427, 428, 429, 430, 431, 432, 433, 434, 435, 436, 437, 438, 439, 440, 441, 442, 443, 444, 445, 446, 447, 448, 449, 450, 451, 452, 453, 454, 455, 456, 457, 458, 459, 460, 461, 462, 463, 464, 465, 466, 467, 468, 469, 470, 471, 472, 473, 474, 475, 476, 477, 478, 479, 480, 481, 482, 483, 484, 485, 486, 487, 488, 489, 490, 491, 492, 493, 494, 495, 496, 497, 498, 499, 500, 501, 502, 503, 504, 505, 506, 507, 508, 509, 510, 511, 512, 513, 514, 515, 516, 517, 518, 519, 520, 521, 522, 523, 524, 525, 526, 527, 528, 529, 530, 531, 532, 533, 534, 535, 536, 537, 538, 539, 540, 541, 542, 543, 544, 545, 546, 547, 548, 549, 550, 551, 552, 553, 554, 555, 556, 557, 558, 559, 560, 561, 562, 563, 564, 565, 566, 567, 568, 569, 570, 571, 572, 573, 574, 575, 576, 577, 578, 579, 580, 581, 582, 583, 584, 585, 586, 587, 588, 589, 590, 591, 592, 593, 594, 595, 596, 597, 598, 599, 600, 601, 602, 603, 604, 605, 606, 607, 608, 609, 610, 611, 612, 613, 614, 615, 616, 617, 618, 619, 620, 621, 622, 623, 624, 625, 626, 627, 628, 629, 630, 631, 632, 633, 634, 635, 636, 637, 638, 639, 640, 641, 642, 643, 644, 645, 646, 647, 648, 649, 650, 651, 652, 653, 654, 655, 656, 657, 658, 659, 660, 661, 662, 663, 664, 665, 666, 667, 668, 669, 670, 671, 672, 673, 674, 675, 676, 677, 678, 679, 680, 681, 682, 683, 684, 685, 686, 687, 688, 689, 690, 691, 692, 693, 694, 695, 696, 697, 698, 699, 700, 701, 702, 703, 704, 705, 706, 707, 708, 709, 710, 711, 712, 713, 714, 715, 716, 717, 718, 719, 720, 721, 722, 723, 724, 725, 726, 727, 728, 729, 730, 731, 732, 733, 734, 735, 736, 737, 738, 739, 740, 741, 742, 743, 744, 745, 746, 747, 748, 749, 750, 751, 752, 753, 754, 755, 756, 757, 758, 759, 760, 761, 762, 763, 764, 765, 766, 767, 768, 769, 770, 771, 772, 773, 774, 775, 776, 777, 778, 779, 780, 781, 782, 783, 784, 785, 786, 787, 788, 789, 790, 791, 792, 793, 794, 795, 796, 797, 798, 799, 800, 801, 802, 803, 804, 805, 806, 807, 808, 809, 810, 811, 812, 813, 814, 815, 816, 817, 818, 819, 820, 821, 822, 823, 824, 825, 826, 827, 828, 829, 830, 831, 832, 833, 834, 835, 836, 837, 838, 839, 840, 841, 842, 843, 844, 845, 846, 847, 848, 849, 850, 851, 852, 853, 854, 855, 856, 857, 858, 859, 860, 861, 862, 863, 864, 865, 866, 867, 868, 869, 870, 871, 872, 873, 874, 875, 876, 877, 878, 879, 880, 881, 882, 883, 884, 885, 886, 887, 888, 889, 890, 891, 892, 893, 894, 895, 896, 897, 898, 899, 900, 901, 902, 903, 904, 905, 906, 907, 908, 909, 910, 911, 912, 913, 914, 915, 916, 917, 918, 919, 920, 921, 922, 923, 924, 925, 926, 927, 928, 929, 930, 931, 932, 933, 934, 935, 936, 937, 938, 939, 940, 941, 942, 943, 944, 945, 946, 947, 948, 949, 950, 951, 952, 953, 954, 955, 956, 957, 958, 959, 960, 961, 962, 963, 964, 965, 966, 967, 968, 969, 970, 971, 972, 973, 974, 975, 976, 977, 978, 979, 980, 981, 982, 983, 984, 985, 986, 987, 988, 989, 990, 991, 992, 993, 994, 995, 996, 997, 998, 999, 1000.

TIMBERON SUB #12
BK 16 PG 47-48
6 OF 6