

TIMBERON SUBDIVISION UNIT - 13

PORTION OF SECTIONS 24 & 25
T-19-S, R-12-E, N.M.P.M.
OTERO COUNTY, NEW MEXICO

Scale: 1" = 200' February 27, 1985
518 Lots — Containing 326.339 Acres

DEDICATION

State of New Mexico
County of Otero

This is to certify that the above Plat of Blocks 102, 103, 114, 173, 175, 176, 177, 179, 180, and 182, Unit 13, Timberon Subdivision, a Subdivision in Otero County, New Mexico is made with the free consent and in accordance with the desires of the undersigned owners and proprietors thereof who by the filing of this Plat do hereby dedicate to the use of the Public the roadways, parks, parking areas, and utility easements as shown hereon.

In witness whereof said owners and proprietors have set their hands and seals this 13th day of February, 1985.

North American Land Developments, Inc.

By: *John F. Mobley*, President, Johnny F. Mobley

Attest: *Nancy S. Mobley*, Assistant Secretary-Treasurer, Nancy S. Mobley

ACKNOWLEDGEMENT

State of New Mexico
County of Otero

The foregoing instrument acknowledged before me by Johnny F. Mobley and Nancy S. Mobley, being the President and Assistant Secretary-Treasurer respectively, of North American Land Developments, Inc., in behalf of said Inc., on this 13th day of February, 1985.

OFFICIAL SEAL

Signature: *Kim Joseph*
Notary Public
My Commission Expires 8-6-88

FILING

State of New Mexico
County of Otero

Filed for record in the office of the County Clerk and Recorder of the County of Otero, New Mexico, on this 13th day of February, 1985.

By: *Andrew C. Wozniak*, Deputy County Clerk

Reception # 025
BK 33
Page 28-37

APPROVAL

State of New Mexico
County of Otero

This Plat of Blocks 102, 103, 114, 173, 175, 176, 177, 179, 180, and 182, Unit 13, Timberon Subdivision, was approved by the Otero Commission on this 13th day of February, 1985.

William G. Gage, Chairman
Otero County Planning Commission

ENGINEER'S CERTIFICATE

"I, Basil R. Smith, Registered Professional Engineer and Land Surveyor, certify this to be a True Plat of Survey prepared from field notes of an actual survey made on the ground by me or under my direction and that the same is true and correct to the best of my knowledge and belief."

Basil R. Smith
Basil R. Smith, P.E. and L.S., N.M. Lic. # 2257

"This Subdivision lies within the Platting and Planning jurisdiction of Governmental Unit _____"

Basil R. Smith
Basil R. Smith, Land Surveyor

"Developer hereby agrees to construct at his own expense all roads in this Subdivision including but not limited to grading, drainage, base course, culverts and bridges."

John F. Mobley
Developer

"A Statement of Development for Roads and Utilities is Recorded in Book _____ of the Records of Otero County."

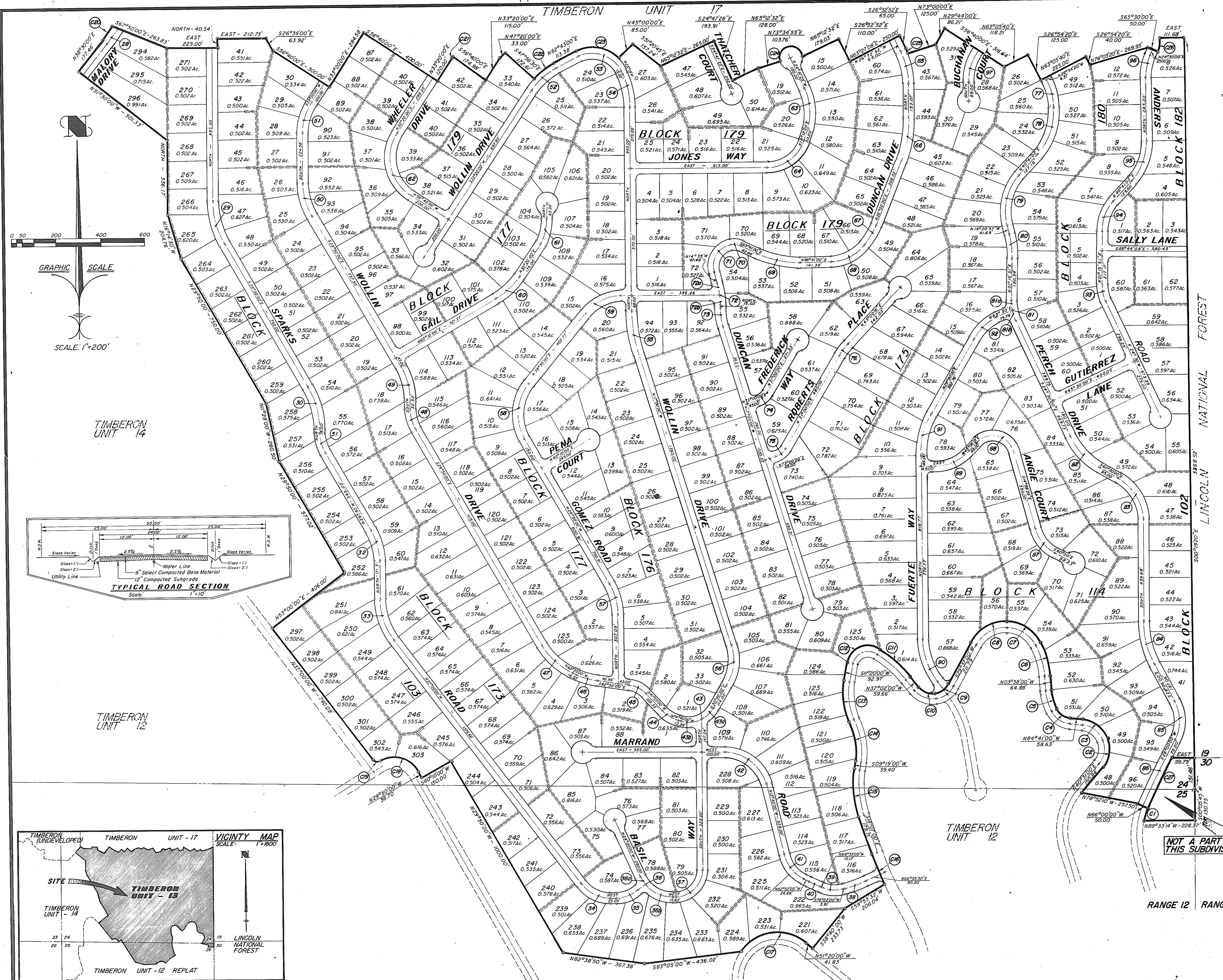
"Restrictive Covenants applicable to this Subdivision is recorded in Book _____ of the Records of Otero County."

Approved this _____ day of _____, 1985.
John F. Mobley
Examining Surveyor Lic. # _____

Approved this 27 day of February, 1985.
Robert P. Bell
Chairman, Otero County Planning Commission

RANGE 12 RANGE 13

NOT A PART OF THIS SUBDIVISION



TIMBERON SUB #13 AMENDED
BK 33 PG 28-37
BK 33 PG 28-29 10F5

DESCRIPTION

BOUNDARY CURVE DATA table with columns: No, RADIUS, DELTA, ARC, TANGENT, CHORD, CH. BEARING, LOCATION

BEING the description of a parcel of land known as Unit 13, Timberon Subdivision and lying in and being a portion of Sections 24 and 25, Township 15 South, Range 12 East, New Mexico Prime Meridian, Otero County, New Mexico and being more particularly described by metes and bounds as follows:

ROAD CENTERLINE CURVE DATA table with columns: No, RADIUS, DELTA, ARC, TANGENT, CHORD, CH. BEARING, LOCATION

THENCE continuing along said R.O.W. line a distance of 138.29 feet along the arc of a curve to the left whose radius is 131.98 feet, whose central angle is 60°02'00" and whose long chord bears North 10°30'00" East a distance of 132.05 feet to a point;

THENCE continuing along said R.O.W. line a distance of 148.71 feet along the arc of a curve to the left whose radius is 983.14 feet, whose central angle is 08°40'00" and whose long chord bears South 22°27'00" East a distance of 148.57 feet to a point;

TIMBERON SUBDIVISION UNIT - 13 PORTION OF SECTIONS 24 and 25 T-19-S, R-12-E, N.M.P.M. OTERO COUNTY, NEW MEXICO

THENCE North 45°00'00" East a distance of 85.00 feet to a point; THENCE South 51°23'45" East a distance of 157.24 feet to a point; THENCE North 65°12'32" East a distance of 265.00 feet to a point in the East R.O.W. line of a 50 foot wide road;

STATE OF NEW MEXICO OTERO COUNTY FIELD RECORD IN MY OFFICE This 20 day of May 2015 All in the presence of Andrew C. Wynham

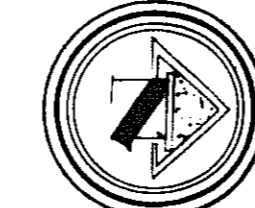
TIMBERON SUB #13 AMENDED BK33 PG 30-31 2015

**TIMBERON SUBDIVISION
UNIT - 13**

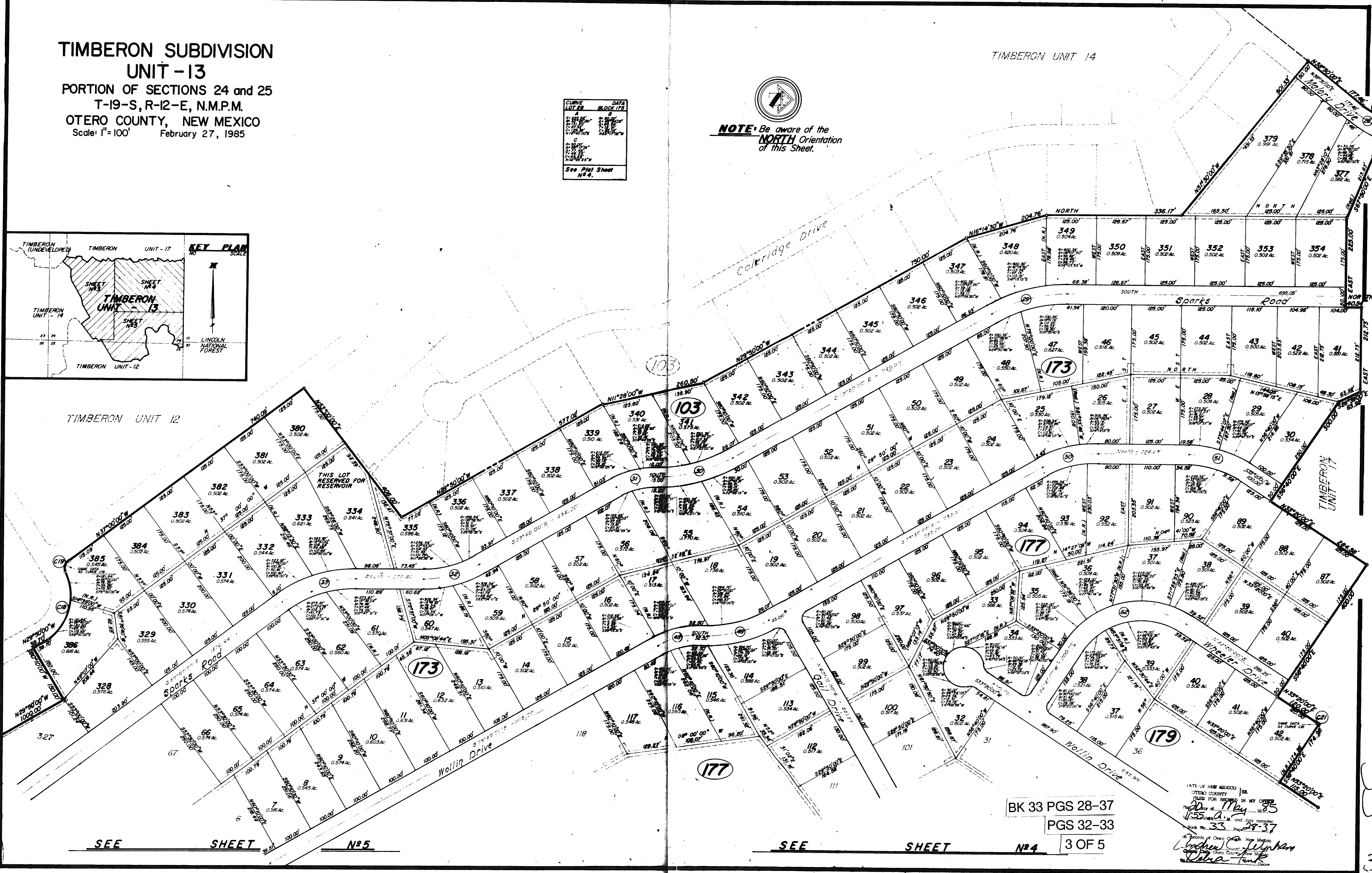
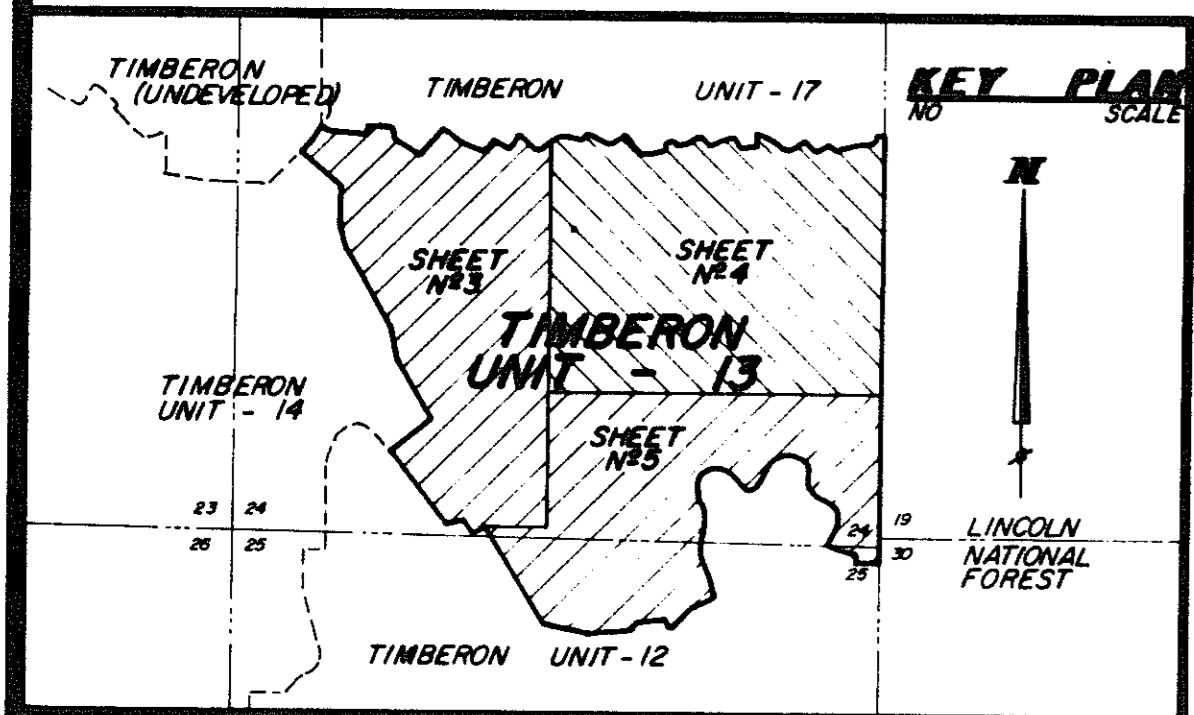
PORTION OF SECTIONS 24 and 25
T-19-S, R-12-E, N.M.P.M.
OTERO COUNTY, NEW MEXICO
Scale: 1"=100' February 27, 1985

TIMBERON UNIT 14

CURVE	LOT NO.	DATA	BLOCK 173
A	1	180.00'	173
B	2	180.00'	173
C	3	180.00'	173
D	4	180.00'	173
E	5	180.00'	173
F	6	180.00'	173
G	7	180.00'	173
H	8	180.00'	173
I	9	180.00'	173
J	10	180.00'	173
K	11	180.00'	173
L	12	180.00'	173
M	13	180.00'	173
N	14	180.00'	173
O	15	180.00'	173
P	16	180.00'	173
Q	17	180.00'	173
R	18	180.00'	173
S	19	180.00'	173
T	20	180.00'	173
U	21	180.00'	173
V	22	180.00'	173
W	23	180.00'	173
X	24	180.00'	173
Y	25	180.00'	173
Z	26	180.00'	173
AA	27	180.00'	173
AB	28	180.00'	173
AC	29	180.00'	173
AD	30	180.00'	173
AE	31	180.00'	173
AF	32	180.00'	173
AG	33	180.00'	173
AH	34	180.00'	173
AI	35	180.00'	173
AJ	36	180.00'	173
AK	37	180.00'	173
AL	38	180.00'	173
AM	39	180.00'	173
AN	40	180.00'	173
AO	41	180.00'	173
AP	42	180.00'	173
AQ	43	180.00'	173
AR	44	180.00'	173
AS	45	180.00'	173
AT	46	180.00'	173
AU	47	180.00'	173
AV	48	180.00'	173
AW	49	180.00'	173
AX	50	180.00'	173
AY	51	180.00'	173
AZ	52	180.00'	173
BA	53	180.00'	173
BB	54	180.00'	173
BC	55	180.00'	173
BD	56	180.00'	173
BE	57	180.00'	173
BF	58	180.00'	173
BG	59	180.00'	173
BH	60	180.00'	173
BI	61	180.00'	173
BJ	62	180.00'	173
BK	63	180.00'	173
BL	64	180.00'	173
BM	65	180.00'	173
BN	66	180.00'	173
BO	67	180.00'	173
BP	68	180.00'	173
BQ	69	180.00'	173
BR	70	180.00'	173
BS	71	180.00'	173
BT	72	180.00'	173
BU	73	180.00'	173
BV	74	180.00'	173
BW	75	180.00'	173
BX	76	180.00'	173
BY	77	180.00'	173
BZ	78	180.00'	173
CA	79	180.00'	173
CB	80	180.00'	173
CC	81	180.00'	173
CD	82	180.00'	173
CE	83	180.00'	173
CF	84	180.00'	173
CG	85	180.00'	173
CH	86	180.00'	173
CI	87	180.00'	173
CJ	88	180.00'	173
CK	89	180.00'	173
CL	90	180.00'	173
CM	91	180.00'	173
CN	92	180.00'	173
CO	93	180.00'	173
CP	94	180.00'	173
CQ	95	180.00'	173
CR	96	180.00'	173
CS	97	180.00'	173
CT	98	180.00'	173
CU	99	180.00'	173
CV	100	180.00'	173
CV	101	180.00'	173
CV	102	180.00'	173
CV	103	180.00'	173
CV	104	180.00'	173
CV	105	180.00'	173
CV	106	180.00'	173
CV	107	180.00'	173
CV	108	180.00'	173
CV	109	180.00'	173
CV	110	180.00'	173
CV	111	180.00'	173
CV	112	180.00'	173
CV	113	180.00'	173
CV	114	180.00'	173
CV	115	180.00'	173
CV	116	180.00'	173
CV	117	180.00'	173
CV	118	180.00'	173
CV	119	180.00'	173
CV	120	180.00'	173
CV	121	180.00'	173
CV	122	180.00'	173
CV	123	180.00'	173
CV	124	180.00'	173
CV	125	180.00'	173
CV	126	180.00'	173
CV	127	180.00'	173
CV	128	180.00'	173
CV	129	180.00'	173
CV	130	180.00'	173
CV	131	180.00'	173
CV	132	180.00'	173
CV	133	180.00'	173
CV	134	180.00'	173
CV	135	180.00'	173
CV	136	180.00'	173
CV	137	180.00'	173
CV	138	180.00'	173
CV	139	180.00'	173
CV	140	180.00'	173
CV	141	180.00'	173
CV	142	180.00'	173
CV	143	180.00'	173
CV	144	180.00'	173
CV	145	180.00'	173
CV	146	180.00'	173
CV	147	180.00'	173
CV	148	180.00'	173
CV	149	180.00'	173
CV	150	180.00'	173
CV	151	180.00'	173
CV	152	180.00'	173
CV	153	180.00'	173
CV	154	180.00'	173
CV	155	180.00'	173
CV	156	180.00'	173
CV	157	180.00'	173
CV	158	180.00'	173
CV	159	180.00'	173
CV	160	180.00'	173
CV	161	180.00'	173
CV	162	180.00'	173
CV	163	180.00'	173
CV	164	180.00'	173
CV	165	180.00'	173
CV	166	180.00'	173
CV	167	180.00'	173
CV	168	180.00'	173
CV	169	180.00'	173
CV	170	180.00'	173
CV	171	180.00'	173
CV	172	180.00'	173
CV	173	180.00'	173



NOTE: Be aware of the NORTH Orientation of this Sheet.



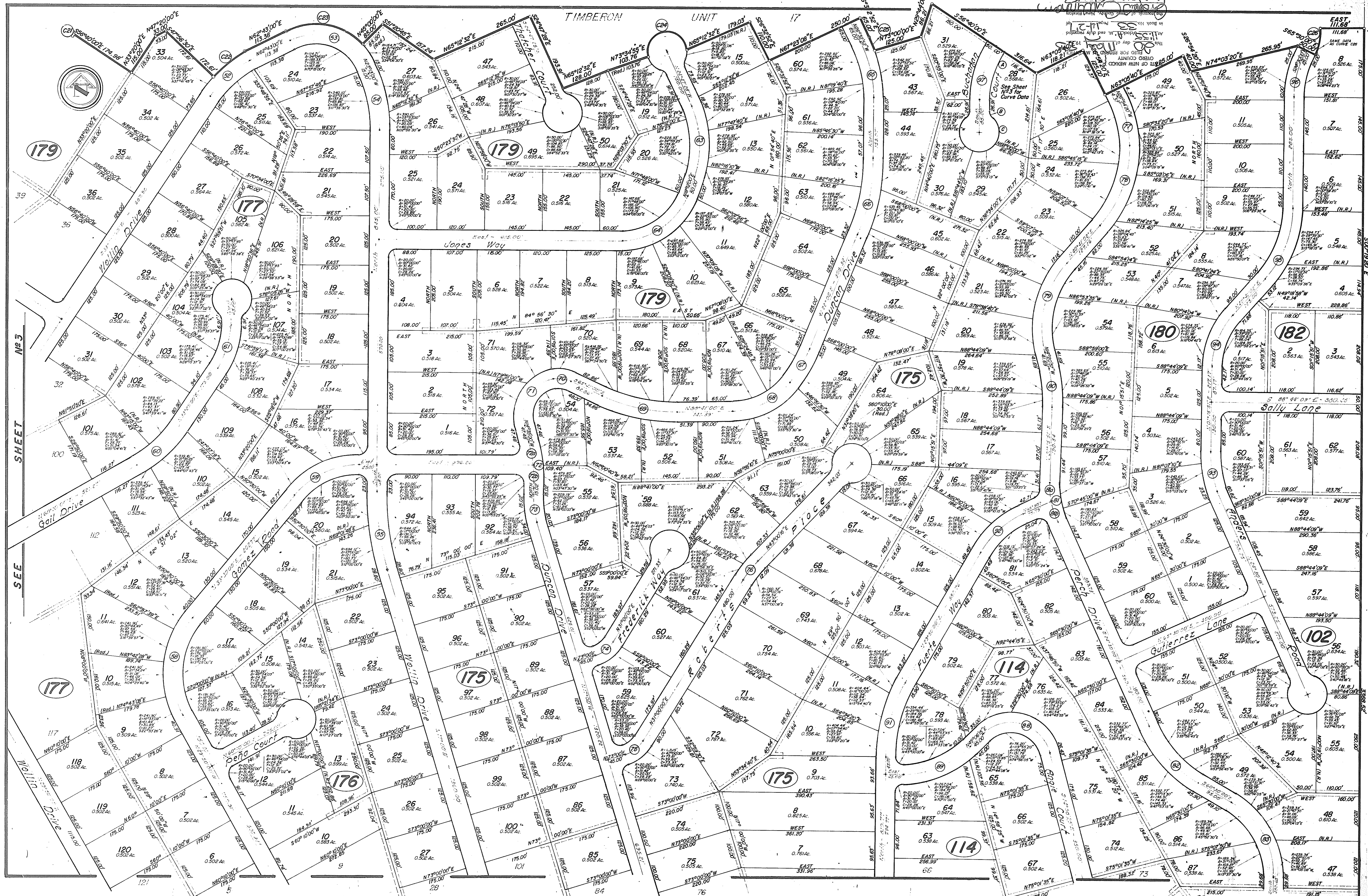
BK 33 PGS 28-37
PGS 32-33
SEE SHEET N#4 3 OF 5

STATE OF NEW MEXICO
OTERO COUNTY
FILED FOR RECORD IN MY OFFICE
this 27th day of May 1985
1155 A.M. and duly recorded
Book No. 33 Page 28-37
Witness: *Walter J. ...*
Debra ...

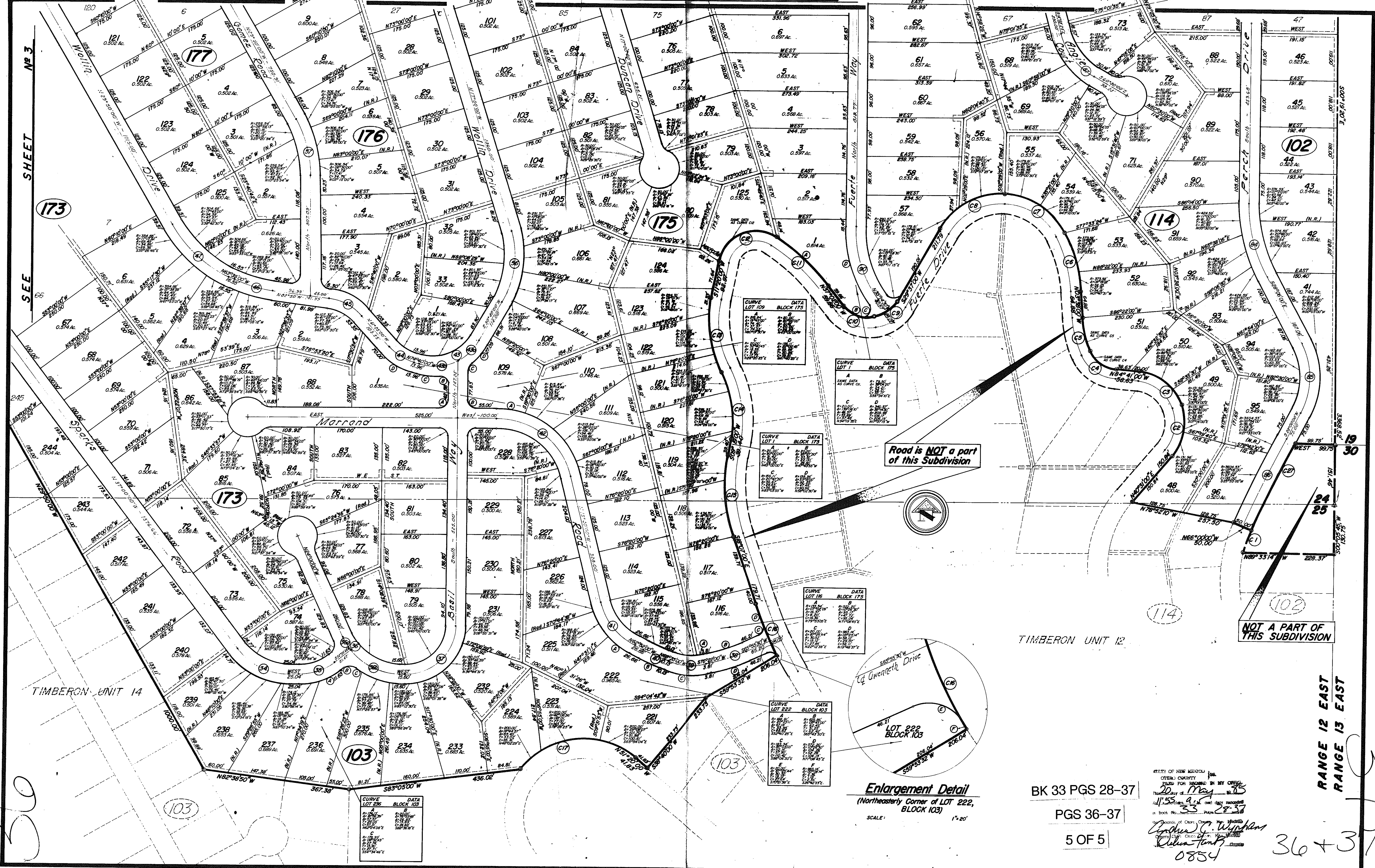
TIMBERON SUB UNIT 13, AMENDED
BK 33 PGS 28-37 PGS 32-33 3 OF 5

33
324

0854 PLAT SHEET 3 OF 3 SHEETS
TIMBERON UNIT-13



TIMBERON SUB #13 AMENDED
BK33 PG 34-35 40F5



TIMBERON SUB UNIT 13, AMENDED
BK 33 PGS 28-37 PGS 36-37 5 OF 5

TIMBERON UNIT 12

NOT A PART OF THIS SUBDIVISION

Road is NOT a part of this Subdivision

RANGE 12 EAST
RANGE 13 EAST

BK 33 PGS 28-37

PGS 36-37

5 OF 5

Enlargement Detail
(Northeast Corner of LOT 222,
BLOCK 103)

SCALE: 1" = 20'

STATE OF NEW MEXICO
COUNTY OF SHERMAN
FILED FOR RECORD BY MY OFFICE
this 20th day of May 1985
11:55 AM
Book No. 33 Page 28-37
By: [Signature]
Deputy Clerk

36 + 37